

**HERCULES TIRES**  
COMMERCIAL





# CONTENTS

<b>MASTER SIZE CHART</b>	<b>2</b>	<b>SPECIALTY TRAILER &amp; COMMERCIAL LIGHT TRUCK</b>	<b>53</b>
<b>HERCULES® TIRES</b>	<b>4</b>	STRONG GUARD® ST	54
		STRONG GUARD® C-ST	54
<b>MEDIUM TRUCK</b>	<b>7</b>	LOW-PRO H-D	55
STRONG GUARD® H-RA	8	H-901 ST/LT	55
STRONG GUARD® H-RD	10	TERRA TRAC® CH4	56
STRONG GUARD® H-DO	12		
STRONG GUARD® H-TL EcoFT	14	<b>IRONMAN® TIRES</b>	<b>59</b>
STRONG GUARD® H-DC	16	<b>MEDIUM TRUCK</b>	<b>61</b>
STRONG GUARD® H-MW	18	I-19A EcoFT	62
STRONG GUARD® H-LS EcoFT	20	I-37D	62
STRONG GUARD® H-MD	22	I-48T EcoFT	63
STRONG GUARD® H-MX	24	I-61S EcoFT	63
STRONG GUARD® H-MA	26	I-502 EcoFT	64
H-309	28	I-181	64
H-933	28	I-192	65
<b>INDUSTRIAL &amp; OTR</b>	<b>30</b>	I-208 EcoFT	65
GRIPPER SKID STEER	34	I-190	66
STRONG GUARD® B-R4	34	I-191	66
STRONG GUARD® S-L2	35	I-301	67
STRONG GUARD® B-I3	35	I-402	67
X-WALL SKS	36	<b>DYNATRAC® TIRES</b>	<b>71</b>
HAULER SKZ	36	<b>MEDIUM TRUCK</b>	<b>73</b>
XD44 SKID STEER	37	RL280+ Smartway	74
HAULER SKS	37	RA200	74
F3 BACKHOE	38	RD240	75
SUPER LUG R4 BACKHOE	38	DL380	75
SUPER LUG ADV R4 BACKHOE	39	DT320	76
SKS R1 TRACTIONMASTER	39	DT340	76
4L/I3 MULTIPURPOSE	40	MA400	77
G2/L2 TELEHANDLER	40	MA440	77
G3/L3 TELEHANDLER	41	RF110+ Smartway	78
L2 LOADER	41		
L3 LOADER	42	<b>SIZE LOAD SPEED GUIDES</b>	<b>80</b>
H-DR 325 E3/L3	42		
H-DR 220 G2/L2	43	<b>CASING ALLOWANCE</b>	<b>83</b>
<b>LAWN &amp; GARDEN</b>	<b>45</b>	<b>BUFFING GUIDELINES</b>	<b>84</b>
TERRA TRAC® TURF	46	<b>LIMITED PROTECTION POLICY</b>	<b>88</b>
<b>AGRICULTURE</b>	<b>49</b>		
AG-TRAC RT45	50		
AG-TRAC I-1	50		

# MASTER SIZE CHART

		STEER			ALL POSITION															
		LONG HAUL			REGIONAL/P&D						ON/OFF ROAD									
RIM DIMENSIONS	SIZE	H-LS	RL280+	I-61S	H-RA	H-RD	H-309	RA200	RD240	I-19A	I-502	I-181	I-192	H-MW	MA440	I-402	H-MA	MA400	I-301	
15	8.25R15																			
	10.00R15																			
17.5	215/75R17.5				H			H		H										
	235/75R17.5				H			H		H										
	245/70R17.5									J										
19.5	10R17.5							J												
	8R19.5							F												
	225/70R19.5				G			G		G										
	245/70R19.5				G			H		H										
20	265/70R19.5							J		J										
	10.00R20											H								
	9R22.5												G							
22.5	10R22.5												H							
	245/75R22.5				G															
	255/70R22.5				H			H		H								H		
	275/70R22.5				H			H			J						H	H		
	295/75R22.5	H	G	H	H	G	H	G		G/H	G									
	295/80R22.5				H															
	11R22.5	H	G	H	H	H	H	G/H	H	H	H						H		H	
	12R22.5											J								
	315/80R22.5					L										L	L		L	
	385/65R22.5														L	L	L			
	425/65R22.5														L	L	L			
	445/65R22.5														L		L			
24	12.00R24																			L
24.5	285/75R24.5	H	G	H		G	H	G		G	G									
	11R24.5	H	G	H		H	H	G/H	H	H	H						H	H	H	

# MASTER SIZE CHART

		DRIVE										TRAILER					
		LONG HAUL			REGIONAL/P&D				ON/OFF ROAD	WINTER	LONG HAUL			LPT			
RIM DIMENSIONS	SIZE	H-DC	DL380	I-208	H-DO	DT340	I-37D	DT320	H-MD	H-MX	H-933	H-TL	RF110+	I-48T	I-190	I-191	
15	8.25R15															G	
	10.00R15																J
17.5	215/75R17.5																
	235/75R17.5																
	245/70R17.5																
19.5	10R17.5																
	8R19.5																
	225/70R19.5	G		G	G	G	G	G			G						
	245/70R19.5	H			H	H	H										
20	265/70R19.5																
	10.00R20																
	9R22.5																
22.5	10R22.5																
	245/75R22.5																
	255/70R22.5																
	275/70R22.5																
	295/75R22.5	H	G	G	G	G	G						G	G	G		
	295/80R22.5																
	11R22.5	H	G/H	G/H	H	G	H				H	H	H	G	G	G	
	12R22.5											J					
	315/80R22.5																
	385/65R22.5																
	425/65R22.5																
	445/65R22.5																
24	12.00R24																
24.5	285/75R24.5	G	G	G	G			G						G	G	G	
	11R24.5	H	G/H	G/H	H	H	H				H	H	H	G	G	G/H	



# HERCULES TIRES

MEDIUM TRUCK	HERCULES	LONG HAUL	REGIONAL P&D	ON/OFF ROAD	WINTER
	STEER	STRONG GUARD H-LS			
	ALL-POSITION		STRONG GUARD® H-RA STRONG GUARD® H-RD H-309	STRONG GUARD® H-MW STRONG GUARD® H-MA	
	DRIVE	STRONG GUARD® H-DC	STRONG GUARD® H-DO STRONG GUARD® H-DC	H-MD H-MX	H-933
	TRAILER	STRONG GUARD® H-TL	STRONG GUARD® H-RA STRONG GUARD® H-RD STRONG GUARD® H-TL		

INDUSTRIAL & OTR	HERCULES	SKIDSTEER LOADERS	TRUCK MOUNTED FORKLIFTS	BACKHOE LOADERS	TELEHANDLERS, COMPACT WHEEL LOADERS	WHEEL LOADERS, MOTOR GRADERS, ARTICULATED DUMP TRUCKS
	BIAS	X-WALL SKS GRIPPER SKID STEER HAULER SKZ XD44 HAULER SKS Strong Guard S-L2	SKS R1 TRACTION-MASTER	SUPER LUG ADV R4 SUPER LUG R4 F3 STRONG GUARD B-R4 STRONG GUARD B-I3	G2/L2 G3/L3 4L/I3 MULTIPURPOSE	L3 L2
	RADIAL					H-DR 325 E3/L3 H-DR 220 G2/L2

SPECIALTY TRAILER & COMMERCIAL LIGHT TRUCK	HERCULES	SPECIALTY TRAILER	ALL-STEEL ST/LT	COMMERCIAL HIGHWAY
	RADIAL	STRONG GUARD® ST	STRONG GUARD C-ST H-901	TERRA TRAC® CH4
	BIAS	LOW-PRO H-D		

LAWN & GARDEN	HERCULES	LAWN & GARDEN
	RESIDENTIAL	TERRA TRAC® TURF





# MEDIUM TRUCK

TIRE SIZE		psi	70	75	80	85	90	95	100	105	110	115	120	123	125	130	135
215/75R17.5	DUAL	(LBS)			3195	3345	3500	3650	3795	3945	4095	4220	4390		4540 (H)		
	SINGLE	(LBS)			3375	3540	3695	3860	4010	4180	4330	4495	4650		4805 (H)		
235/75R175.5	DUAL	(lbs)			3970	4170	4365	4555	4745	4935	5125	5310	5495		5675 (J)		
	SINGLE	(lbs)			4200	4410	4615	4820	5025	5225	5420	5620	5810		6005 (J)		
225/70R19.5	DUAL	(lbs)	2720	2860	3000	3115	3245	2415 (F)	3490	3615	3750 (G)						
	SINGLE	(lbs)	2895	3040	3195	3315	3450	3640 (F)	3715	3845	3970 (G)						
245/70R19.5	DUAL	(lbs)	3070	3220	2415	3515	3655	3860	3940	4075	4300 (G)	4520	4675 (H)				
	SINGLE	(lbs)	3265	3425	3640	3740	3890	4080	4190	4335	4540 (G)	4740	4940 (H)				
245/75R22.5	DUAL	(lbs)	3160	3315	3525	3615	3765	3970	4055	4195	4300 (G)						
	SINGLE	(lbs)	3470	3645	3860	3975	4140	4300	4455	4610	4675 (G)						
255/70R22.5	DUAL	(lbs)	3585	3765	3970	4110	4275	4410	4455	4610	4675	4915	5070 (H)				
	SINGLE	(lbs)	3815	4005	4190	4370	4550	4675	4895	5065	5205	5400	5510 (H)				
275/70R22.5	DUAL	(lbs)	3865	4120	4315	4560	4745	4990	5170	5350	5585	5760	5995		6170	6395 (H)	
	SINGLE	(lbs)	4200	4475	4685	4955	5155	5420	5615	5810	6065	6255	6510		6700	6940 (H)	
295/75R22.5	DUAL	(lbs)	4095	4300	4540	4690	4885	5070	5260	5440	5675 (G)	5795	6005 (H)				
	SINGLE	(lbs)	4500	4725	4940	5155	5370	5510	5780	5980	6175 (G)	6370	6610 (H)				
295/80R22.5	DUAL	(lbs)		4860	5070	5305	5525	5840	5945	6150	6395	6550	6780		6740 (J)		
	SINGLE	(lbs)		5340	5510	5830	6070	6395	6535	6760	6940	7200	7390		7830 (J)		
10R22.5	DUAL	(lbs)	3860	4045	4230	4410	4585	4760	4940	5075	5210	5355 (G)					
	SINGLE	(lbs)	4080	4280	4480	4675	4850	5025	5205	5360	5515	5675 (G)					
11R22.5	DUAL	(lbs)	4380	4580	4760	4950	5205	5415	5625	5840	5895 (G)	5950	6005 (H)	6390 (H)			
	SINGLE	(lbs)	4530	4770	4990	5220	5510	5730	5950	6175	6320 (G)	6465	6610 (H)	6940 (H)			
12R22.5	DUAL	(lbs)	4780	4990	5190	5390	5675	5785	5895	6005	6265	6525	6780		6950	7070	7160 (J)
	SINGLE	(lbs)	4940	5200	5450	5690	6005	6205	6405	6610	6870	7130	7390		7570	7710	7830 (J)
315/80R22.5	DUAL	(lbs)	5095	5345	5675	5840	6070	6395	6545	6770	6940	7210	7610		7910	9090 (L)	
	SINGLE	(lbs)	5600	5875	6175	6415	6670	6940	7190	7440	7610	7920	8270		8690	10200 (L)	
385/65R22.5	SINGLE	(lbs)	6380	6720	6940	7350	7650	8050	8230	8510	8820	9050	9370		9650	9920 (L)	
425/65R22.5	SINGLE	(lbs)	7590	7990	8270	8740	9100	9370	9790	10100	10500	10700	11400 (L)				
445/65R22.5	SINGLE	(lbs)	8230	8660	9090	9480	9870	10200	10600	11000	11400	11700	12300 (L)				
285/75R24.5	DUAL	(lbs)	4135	4340	4540	4740	4930	5205	5310	5495	5675 (G)	5860	6175 (H)				
	SINGLE	(lbs)	4545	4770	4940	5210	5450	5675	5835	6040	6175 (G)	6440	6780 (H)				
11R24.5	DUAL	(lbs)	4660	4870	5070	5260	5510	5675	5840	6005	6205 (G)	6405	6610 (H)				
	SINGLE	(lbs)	4820	5070	5310	5550	5840	6095	6350	6610	6790 (G)	6970	7160 (H)				

Tire load limits at various inflation pressures are based upon Tire and Rim Association (TRA) standards and tables, except where there is no specification established by the TRA. In these few cases, the tire design is based on the European Tire and Rim Technical Organization (ETRTO) whose standards govern these tires designs.



# STRONG GUARD® H-RA

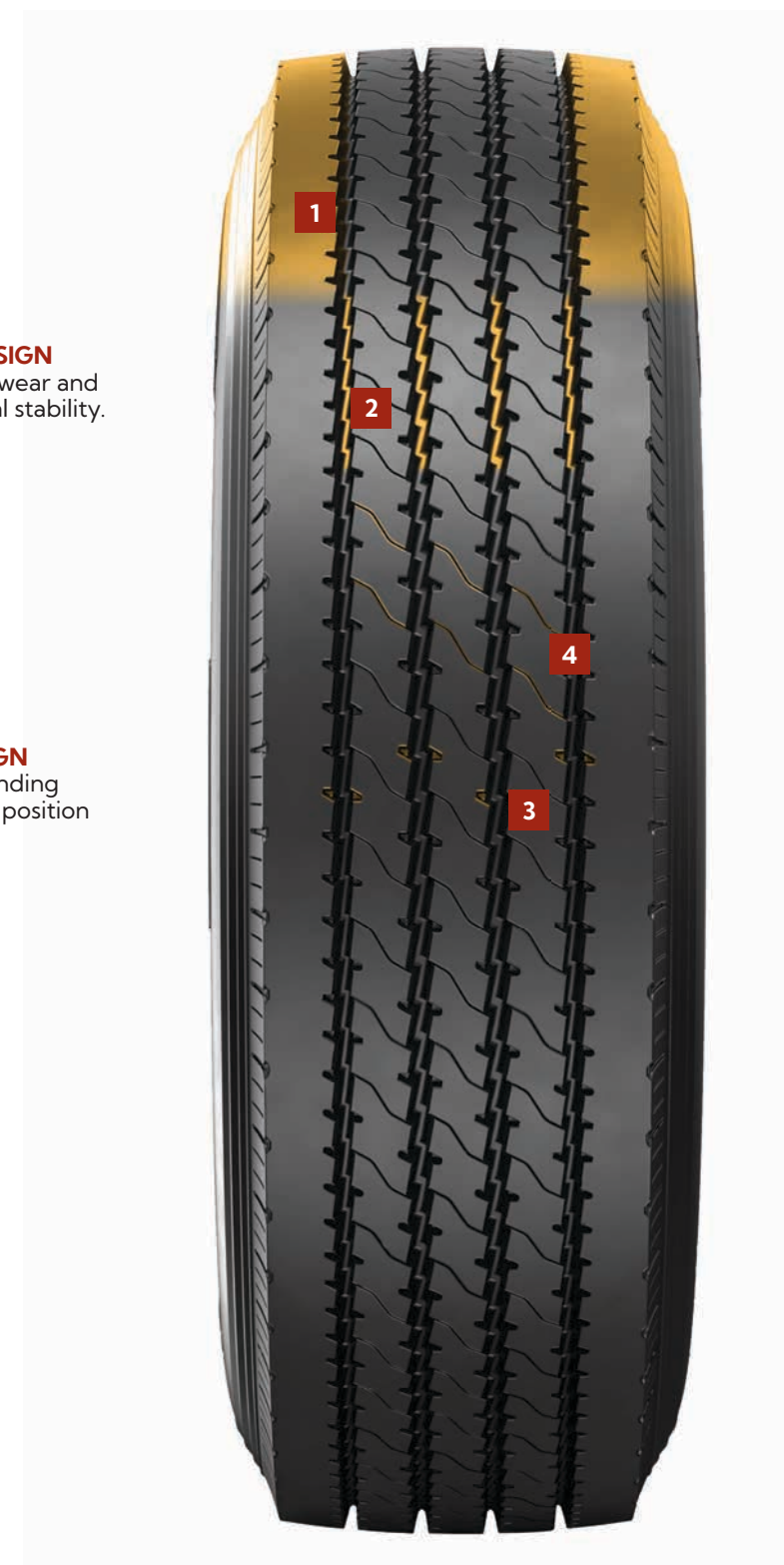
PREMIUM | REGIONAL | ALL-POSITION

The Strong Guard® H-RA Regional All-Position brings the breadth and depth to the Strong Guard line, currently offering 11 skus to suit our customer's needs.

- Upgraded super tensile strength steel cord provides extra durability to the carcass and steel belts, resulting in lower heat generation while protecting the integrity of the tire casing.
- Advanced silica compound technology allows the Strong Guard H-RA to have the best of both worlds by optimizing fuel efficiency and removal mileage with no sacrifice to wet grip.



## FEATURES & BENEFITS



**1**  
**A WIDE SOLID SHOULDER DESIGN**  
promotes even wear and enhanced lateral stability.

**2**  
**ZIG-ZAG GROOVE DESIGN**  
provides outstanding handling for all-position application.

**3**  
**MULTI-POINT EDGED GROOVES**  
deliver better dry and wet traction.

**4**  
**WAVY LATERAL SIPES**  
provide excellent wet grip and promote even wear.

### PERFORMANCE PROMISE<sup>1</sup>



#### 84-MONTH

These Hercules Strong Guard tires have a Limited Protection Policy against defects in workmanship or material for 84 months from the date of purchase.



#### WORKMANSHIP & MATERIALS

If this tire becomes unserviceable due to a flaw in workmanship or materials, we will replace it at no charge during the first 50% of tread life.



#### CASING ALLOWANCE & RETREADS

Tires carry a casing allowance for 3 retreads.

<sup>1</sup> See complete Limited Protection Policy on pages 88-94 for details and exclusions.

ITEM#	SIZE	LOAD/SPEED	PLY RATING	MIN. RIM WIDTH (IN)	MAX. RIM WIDTH (IN)	TREAD DEPTH (32NDS)	WEIGHT (LBS)	OVERALL DIAMETER (IN)	SECTION WIDTH (IN)	SINGLE MAX LOAD @ PRESSURE	DUAL MAX LOAD @ PRESSURE	RPM
95330	11R22.5/16	146/143M	H	7.50	8.25	15.7	111.55	41.50	10.98	6610@120	6005@120	501
95321	215/75R17.5/16	135/133L	H	6.00	6.75	15.7	57.98	30.20	8.31	4805@123	4540@123	693
95322	235/75R17.5/18	143/141L	H	6.75	6.75	16.4	66.14	31.38	9.17	6005@128	5675@128	667
95323	225/70R19.5/14	128/126L	G	6.00	7.50	15.7	63.49	31.89	8.90	3970@110	3750@110	655
95324	245/70R19.5/14	133/131L	G	6.75	7.50	16.4	75.40	33.03	9.76	4540@110	4300@110	633
95325	255/70R22.5/16	140/137L	H	7.50	8.25	17.0	92.06	36.61	10.04	5510@120	5070@120	571
95326	275/70R22.5/16	148/145M	H	7.50	8.25	18.3	105.60	37.72	10.87	6940@130	6395@130	555
95328.1	295/75R22.5/16	146/143M	H	8.25	9.00	16.4	114.24	39.92	11.73	6610@120	6005@120	521
97870	295/80R22.5/18	152/148M	J	8.25	9.00	16.5	124.56	41.10	11.61	7830@125	6740@125	491
98523	245/75R22.5/14	134/131 - L	G	6.75	7.50	17.0	87.10	37.00	9.65	4675@110	4300@110	545

# STRONG GUARD® H-RD

PREMIUM | REGIONAL | DEEP ALL-POSITION

The Hercules Strong Guard® H-RD is a Regional Deep Tread All-position design optimized for higher-scrub applications. It is available in seven standard and low-profile 22.5 inch and 24.5 inch sizes, including 315/80R22.5.

- Upgraded super tensile strength steel cord provides extra durability to the carcass and steel belts, resulting in lower heat generation while protecting the integrity of the tire casing.
- Advanced silica compound technology allows the Strong Guard H-RD to have the best of both worlds by optimizing fuel efficiency and removal mileage with no sacrifice to wet grip.



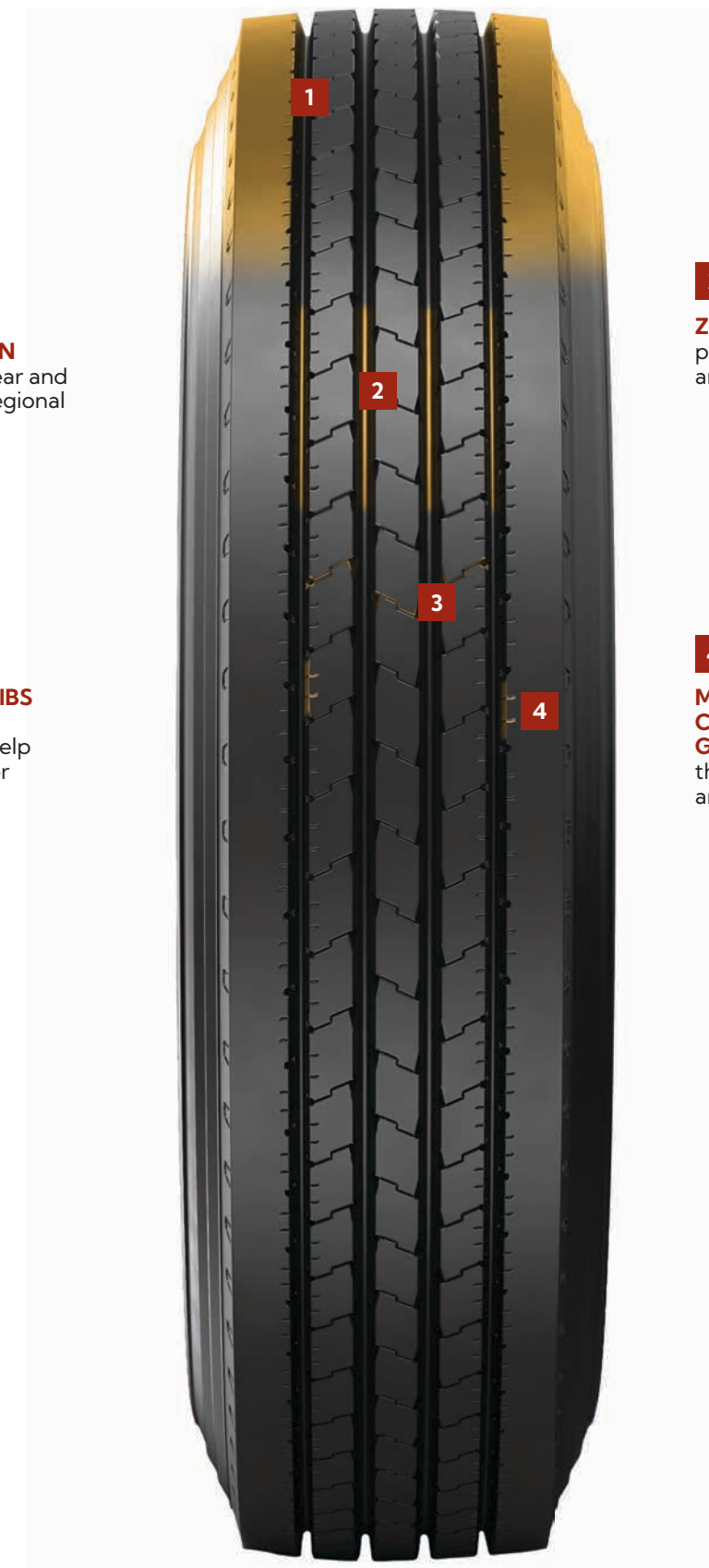
## FEATURES & BENEFITS

**1**  
**A WIDE SOLID SHOULDER DESIGN**  
promoting even wear and lateral stability in regional steer axle use.

**2**  
**STONE EJECTOR RIBS**  
which help prevent stone drilling and help preserve casings for retreading.

**3**  
**ZIG-ZAG LATERAL SIPING**  
providing excellent wet grip and enhancing even wear.

**4**  
**MICRO-SIPES ON CIRCUMFERENTIAL GROOVE EDGES**  
that heighten wet traction and improve even wear.



## PERFORMANCE PROMISE<sup>1</sup>



### 84-MONTH

These Hercules Strong Guard tires have a Limited Protection Policy against defects in workmanship or material for 84 months from the date of purchase.



### WORKMANSHIP & MATERIALS

If this tire becomes unserviceable due to a flaw in workmanship or materials, we will replace it at no charge during the first 50% of tread life.



### CASING ALLOWANCE & RETREADS

Tires carry a casing allowance for 3 retreads.

<sup>1</sup> See complete Limited Protection Policy on pages 88-94 for details and exclusions.

ITEM#	SIZE	LOAD/SPEED	PLY RATING	MIN. RIM WIDTH (IN)	MAX. RIM WIDTH (IN)	TREAD DEPTH (32NDS)	WEIGHT (LBS)	OVERALL DIAMETER (IN)	SECTION WIDTH (IN)	SINGLE MAX LOAD @ PRESSURE	DUAL MAX LOAD @ PRESSURE	RPM
95335	11R22.5/16	146/143L	H	7.50	8.25	21.4	121.69	41.50	10.98	6610@120	6005@120	501
95337.2	11R24.5/16	149/146L	H	7.50	8.25	21.4	130.51	43.46	10.98	7160@120	6610@120	478
95332	315/80R22.5/20	161/157L	L	9.00	8.25	19.5	134.48	42.36	12.28	10200@130	9090@130	490
95331	295/75R22.5/14	144/141L	G	8.25	9.00	21.4	120.59	39.92	11.73	6175@110	5675@110	521
95333	285/75R24.5/14	144/141L	G	8.25	9.75	21.4	125.44	41.34	11.14	6175@110	5675@110	503



# STRONG GUARD® H-DO

PREMIUM | OPEN SHOULDER | DRIVE

The New Strong Guard® H-DO regional drive tire features an open shoulder design coupled with the latest compounds and technologies that deliver extended mileage and dependable traction.

- Featuring a 12% wider tread, the Strong Guard H-DO provides 11% more surface area than the previous generation tires improving vehicle stability and removal mileage
- The proprietary tread and sidewall design, coupled with a curb guard and specially angled grooves on the shoulder lugs work well for high scrub drive applications to resist cuts, abrasions and stone retention.



## FEATURES & BENEFITS

**1 GEN-H TREAD COMPOUND**  
delivers extended mileage in addition to promoting outstanding wet traction and stable handling via a calculated balance of compounds.

**2 OPEN SHOULDER TREAD DESIGN**  
promotes self-cleaning while enhancing traction in all road conditions.

**3 3D SIPES**  
increase control in dry and slippery conditions while guarding against irregular wear by interlocking the tread blocks to improve rigidity and reduce deformation.

**4 OPTIMIZED FOOTPRINT AND WIDE TREAD DESIGN**  
extends tread life, improves product performance and increases vehicle stability due to a larger contact patch.



## PERFORMANCE PROMISE<sup>1</sup>



### 84-MONTH

These Hercules Strong Guard tires have a Limited Protection Policy against defects in workmanship or material for 84 months from the date of purchase.



### WORKMANSHIP & MATERIALS

If this tire becomes unserviceable due to a flaw in workmanship or materials, we will replace it at no charge during the first 50% of tread life.



### CASING ALLOWANCE & RETREADS

Tires carry a casing allowance for 3 retreads.

<sup>1</sup> See complete Limited Protection Policy on pages 88-94 for details and exclusions.

ITEM#	SIZE	LOAD/SPEED	PLY RATING	MIN. RIM WIDTH (IN)	MAX. RIM WIDTH (IN)	TREAD DEPTH (32NDS)	WEIGHT (LBS)	OVERALL DIAMETER (IN)	SECTION WIDTH (IN)	SINGLE MAX LOAD @ PRESSURE	DUAL MAX LOAD @ PRESSURE	RPM
98378	10R22.5/14	141/139L	G	6.75	7.50	23.0	112.40	40.55	10.00	5675@115	5355@115	538
98265	11R22.5/16	146/143L	H	7.50	8.25	26.0	137.78	41.93	10.98	6610@120	6610@120	522
98267	11R24.5/16	149/146L	H	7.50	8.25	26.0	147.71	43.46	10.98	7160@120	6610@120	496
98379	225/70R19.5/14	128/126N	G	6.00	6.75	21.0	72.12	31.93	8.86	3970@110	3750@110	653
98380	245/70R19.5/16	136/134N	H	6.75	7.50	23.0	81.87	33.03	9.65	4940@120	4675@120	655
98268.1	285/75R24.5/14	144/141L	G	8.25	8.25	26.0	137.57	41.34	11.14	6175@110	5675@110	519
98270	295/75R22.5/14	144/141L	G	8.25	9.00	26.0	129.85	39.92	11.73	6175@110	5675@110	540



# STRONG GUARD® H-TL

PREMIUM | LONG HAUL | TRAILER

The name says it all, the Strong Guard® H-TL is a tough tire designed for regional and long haul trailer positions in highway service.

- Upgraded super tensile strength steel cord provides extra durability to the carcass and steel belts, resulting in lower heat generation while protecting the integrity of the tire casing for the long haul.
- Advanced silica compound technology allows the Strong Guard H-TL to have the best of both worlds by optimizing fuel efficiency and removal mileage with no sacrifice to wet grip.



Constructed with EcoFT, an EPA Smartway verified technology

## PERFORMANCE PROMISE<sup>1</sup>



### 84-MONTH

These Hercules Strong Guard tires have a Limited Protection Policy against defects in workmanship or material for 84 months from the date of purchase.



### WORKMANSHIP & MATERIALS

If this tire becomes unserviceable due to a flaw in workmanship or materials, we will replace it at no charge during the first 50% of tread life.



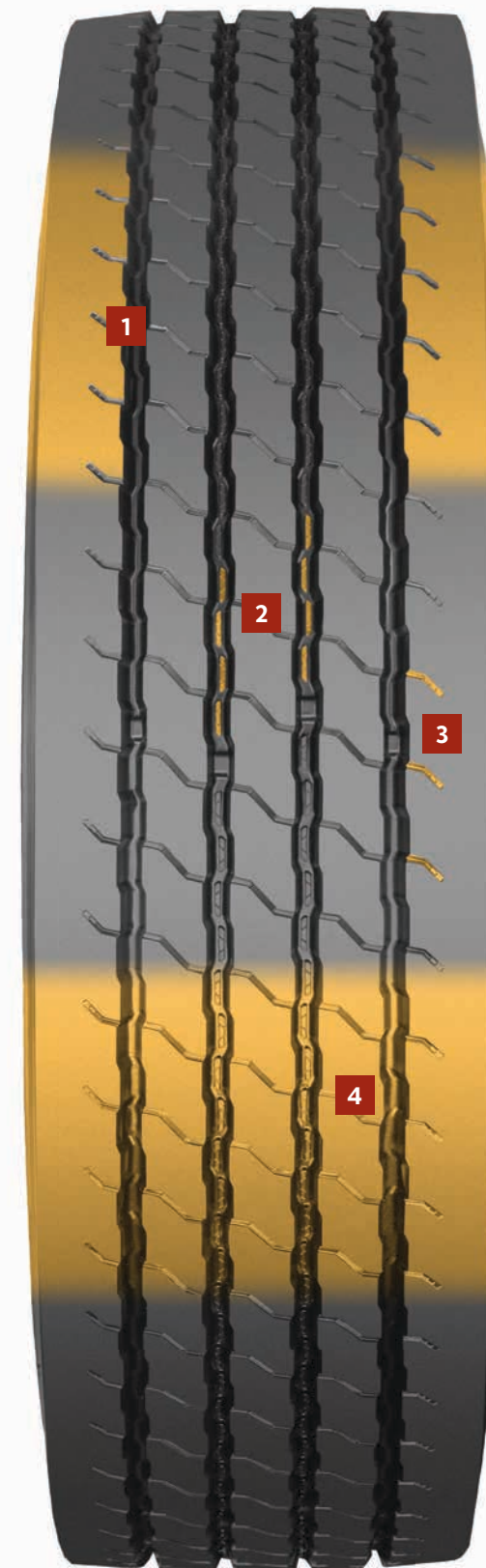
### CASING ALLOWANCE & RETREADS

Tires carry a casing allowance for 3 retreads.

<sup>1</sup> See complete Limited Protection Policy on pages 88-94 for details and exclusions.

ITEM#	SIZE	LOAD/SPEED	PLY RATING	MIN. RIM WIDTH (IN)	MAX. RIM WIDTH (IN)	TREAD DEPTH (32NDS)	WEIGHT (LBS)	OVERALL DIAMETER (IN)	SECTION WIDTH (IN)	SINGLE MAX LOAD @ PRESSURE	DUAL MAX LOAD @ PRESSURE	RPM
96831	11R22.5/14	144/142M	G	7.50	8.25	13.9	108.03	41.50	10.98	6175@105	5840@105	501
96833	11R24.5/14	146/143M	G	7.50	8.25	13.9	112.44	43.46	10.98	6610@105	6005@105	478
96835	295/75R22.5/14	144/141M	G	8.25	8.25	13.9	101.41	39.92	11.73	6175@110	5675@110	521
96837	285/75R24.5/14	144/141L	G	8.25	9.00	13.9	110.23	41.34	11.14	6175@110	5675@110	503

## FEATURES & BENEFITS



**1**  
**WIDE SHOULDER 5 RIB TREAD DESIGN**  
Promotes uniform wear, enhanced lateral stability and reduced tread squirm.

**2**  
**STONE EJECTOR PLATFORM**  
Optimal 14/32nds tread depth enhanced with stone ejectors guard the belt package and casing from premature damage caused by stone drilling for better retreadability.

**3**  
**SHOULDER WEAR INDICATORS**  
Unique stair-step indicators detect irregular shoulder wear and alert the driver corrective action is required before the tire is damaged.

**4**  
**INNOVATIVE SILICA TREAD COMPOUND**  
New generation active silica tread compound delivers a balance of long wear and improved rolling resistance for lower costs per mile.



# STRONG GUARD® H-DC

PREMIUM | CLOSED SHOULDER | DRIVE

The new Strong Guard® H-DC long haul/regional drive tire features a closed shoulder design coupled with the latest compounds and technologies that delivers a balance of extended mileage and optimal fuel efficiency.

- Featuring a 12% wider tread, the Strong Guard H-DC is designed to fight irregular wear in the long haul while improving durability for regional applications.
- The proprietary tread and sidewall design features shoulder notches and a continuous center rib used to improve heat dissipation and promote rigidity for better handling and improved wear.



## PERFORMANCE PROMISE<sup>1</sup>



### 84-MONTH

These Hercules Strong Guard tires have a Limited Protection Policy against defects in workmanship or material for 84 months from the date of purchase.



### WORKMANSHIP & MATERIALS

If this tire becomes unserviceable due to a flaw in workmanship or materials, we will replace it at no charge during the first 50% of tread life.



### CASING ALLOWANCE & RETREADS

Tires carry a casing allowance for 3 retreads.

<sup>1</sup> See complete Limited Protection Policy on pages 88-94 for details and exclusions.

ITEM#	SIZE	LOAD/SPEED	PLY RATING	MIN. RIM WIDTH (IN)	MAX. RIM WIDTH (IN)	TREAD DEPTH (32NDS)	WEIGHT (LBS)	OVERALL DIAMETER (IN)	SECTION WIDTH (IN)	SINGLE MAX LOAD @ PRESSURE	DUAL MAX LOAD @ PRESSURE	RPM
98274	11R22.5/16	146/143L	H	7.50	8.25	30.0	143.04	41.93	11.00	6610@120	6005@120	522
98276	11R24.5/16	149/146L	H	7.50	8.25	30.0	153.11	43.46	11.00	7160@120	6610@120	496
98271	225/70R19.5/14	128/126N	G	6.00	6.75	21.0	73.23	31.93	8.86	3970@110	3750@110	653
98272	245/70R19.5/16	136/134N	H	6.75	7.50	23.0	83.56	33.03	9.65	4940@120	4675@120	655
98277	285/75R24.5/14	144/141L	G	8.25	8.25	30.0	142.91	41.34	11.22	6175@110	5675@110	519
98280	295/75R22.5/16	146/143L	H	8.25	9.00	30.0	134.97	39.92	11.61	6610@120	6005@120	540

## FEATURES & BENEFITS



**1 GEN-H TREAD COMPOUND**  
Delivers extended mileage in addition to promoting traction and stable handling without sacrificing wet traction via a calculated balance of compounds.

**2 OPTIMIZED FOOTPRINT AND WIDE TREAD DESIGN**  
Extends tread life, improves product performance and increases vehicle stability due to a larger contact patch.

**3 3D SIPES**  
Increase control in dry and slippery conditions while guarding against irregular wear by interlocking the tread blocks to improve rigidity and reduce deformation.

**4 CLOSED SHOULDER AND CONTINUOUS CENTER RIB DESIGN**  
Promote stability for line haul situations while fighting irregular wear.



# STRONG GUARD® H-MW

WIDE BASE | MIXED SERVICE | ALL-POSITION

The new Strong Guard H-MW® features an aggressive multi-use tread designed for heavy haul mixed service applications.

- Featuring an improved 5% deeper tread depth at 23/32nds, providing added traction and tread life.
- Four steel belt construction coupled with Spiral Wrapping technology allows for even weight distribution throughout the contact patch, increased stability and even treadwear.



## PERFORMANCE PROMISE<sup>1</sup>



### 84-MONTH

These Hercules Strong Guard tires have a Limited Protection Policy against defects in workmanship or material for 84 months from the date of purchase.



### WORKMANSHIP & MATERIALS

If this tire becomes unserviceable due to a flaw in workmanship or materials, we will replace it at no charge during the first 50% of tread life.



### CASING ALLOWANCE & RETREADS

Tires carry a casing allowance for 3 retreads.

<sup>1</sup> See complete Limited Protection Policy on pages 88-94 for details and exclusions.

ITEM#	SIZE	LOAD/SPEED	PLY RATING	MIN. RIM WIDTH (IN)	MAX. RIM WIDTH (IN)	TREAD DEPTH (32NDS)	WEIGHT (LBS)	OVERALL DIAMETER (IN)	SECTION WIDTH (IN)	SINGLE MAX LOAD @ PRESSURE	DUAL MAX LOAD @ PRESSURE	RPM
98375	385/65R22.5	160K	20	11.75	12.25	23	175.9	42.20	15.32	9920@130	—	495
98376	425/65R22.5	165K	20	12.25	13.00	23	208.6	41.90	16.93	11340@120	—	472
98377	445/65R22.5	169K	20	13.00	14.00	23	212.1	43.50	17.48	12775@130	—	462

## FEATURES & BENEFITS

**1 CUT AND CHIP RESISTANT COMPOUND**  
Designed specifically to perform in mixed service applications.

**2 STONE EJECTORS**  
In all three grooves to protect the casing from road hazards in mixed service applications.

**3 PROPRIETARY TREAD DESIGN**  
Large siped tread blocks provide improved handling and enhanced traction in mixed service applications.

**4 CURB PROTECTOR**  
Protects the sidewall from damage.





# STRONG GUARD® H-LS

PREMIUM | LONG HAUL | STEER

Built for the Long Haul. Introducing the all-new Strong Guard H-LS designed to bring confidence in long haul and super-regional highway application offering fuel efficiency, mileage and retreadability.

- Balanced compounds allow for increased tread life without compromising fuel efficiency.
- Optimal footprint provides uniform pressure distribution improving tread life, vehicle handling and vehicle stability under load.
- Lateral sipes cut through water providing more traction in wet conditions.
- Groove technology maximizes tear resistance while ejectors minimizes stone retention.
- Decoupling grooves help resist the onset of irregular wear in long haul applications.



Constructed with EcoFT, an EPA Smartway verified technology

## PERFORMANCE PROMISE<sup>1</sup>



### 84-MONTH

These Hercules Strong Guard tires have a Limited Protection Policy against defects in workmanship or material for 84 months from the date of purchase.



### WORKMANSHIP & MATERIALS

If this tire becomes unserviceable due to a flaw in workmanship or materials, we will replace it at no charge during the first 50% of tread life.



### CASING ALLOWANCE & RETREADS

Tires carry a casing allowance for 3 retreads.

<sup>1</sup> See complete Limited Protection Policy on pages 88-94 for details and exclusions.

ITEM#	SIZE	LOAD/SPEED	PLY RATING	MIN. RIM WIDTH (IN)	MAX. RIM WIDTH (IN)	TREAD DEPTH (32NDS)	WEIGHT (LBS)	OVERALL DIAMETER (IN)	SECTION WIDTH (IN)	SINGLE MAX LOAD @ PRESSURE	DUAL MAX LOAD @ PRESSURE	RPM
98513	11R22.5/16	146/143M	H	7.50	8.25	19.0	122.8	41.50	10.98	6610@120	6005@120	522
98514	11R24.5/16	149/146M	H	7.50	8.25	19.0	133.0	43.46	10.98	7160@120	6610@120	496
98515	285/75R24.5/16	147/144M	H	8.25	8.25	19.0	124.6	41.34	11.14	6780@120	6175@120	519
98516	295/75R22.5/16	146/143M	H	8.25	9.00	19.0	117.6	39.92	11.73	6610@120	6005@120	540

## FEATURES & BENEFITS

**1**  
**BALANCED COMPOUNDS**  
Allow for increased tread life without compromising fuel efficiency.

**2**  
**OPTIMAL FOOTPRINT**  
Provides uniform pressure distribution improving tread life, vehicle handling and vehicle stability under load.

**3**  
**LATERAL SIPES**  
Cut through water providing more traction in wet conditions.

**4**  
**GROOVE TECHNOLOGY**  
Maximizes tear resistance while ejectors minimizes stone retention.

**5**  
**DECOUPLING GROOVES**  
Help resist the onset of irregular wear in long haul applications.





# STRONG GUARD® H-MD

PREMIUM | MIXED SERVICE | DRIVE

The new Strong Guard H-MD Mixed-Service Drive tire features a deep open shoulder design coupled with the latest compounds and technologies that deliver a balance of enhanced traction and handling in on and off-road conditions.

- Featuring an enhanced speed rating of "K" 68MPH to meet on-road demands.
- The 7% wider tread width, staggered gem-shaped lugs and open shoulder design provide an optimized footprint for heavy load applications both on and off-road.



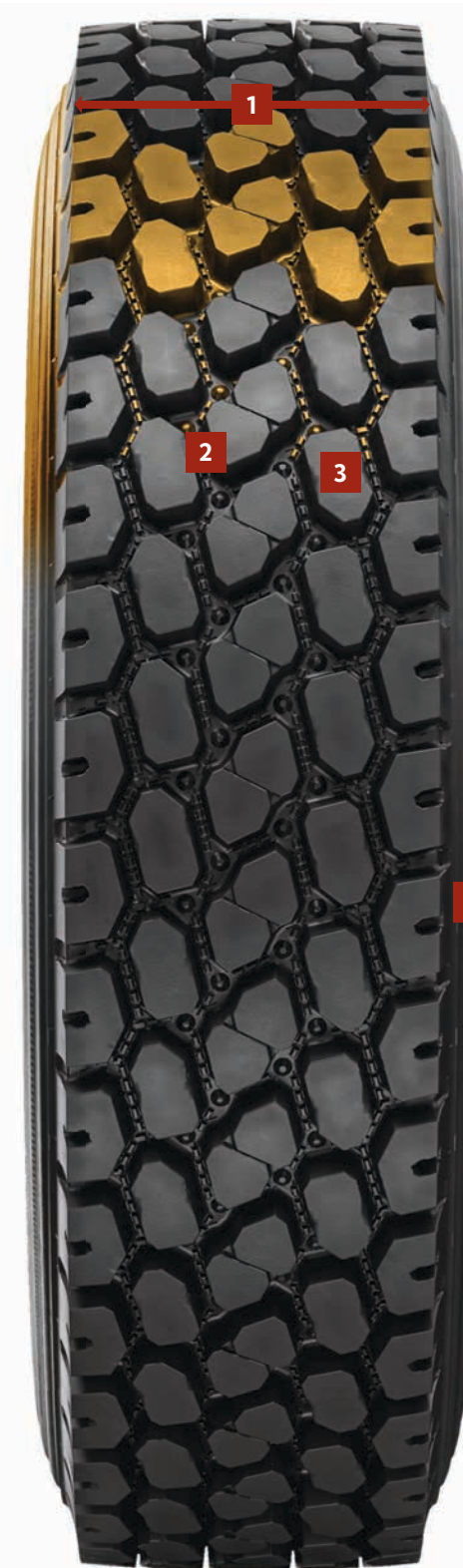
## FEATURES & BENEFITS

**1**  
**OPTIMIZED FOOTPRINT AND WIDE TREAD DESIGN**  
 Extends tread life, improves product performance and increases vehicle stability due to a larger contact patch.

**2**  
**CUT AND CHIP RESISTANT COMPOUND**  
 Designed specifically to withstand the abuse brought by the rough terrain of mixed service applications.

**3**  
**TCS STONE EJECTORS**  
 Full coverage stone ejectors with added Truncated Cone Shaped ejectors protect the tire casing from multiple angles.

**4**  
**CURB PROTECTOR**  
 Protects the sidewall and casing from damage in mixed-service applications.



### PERFORMANCE PROMISE<sup>1</sup>



#### 84-MONTH

These Hercules Strong Guard tires have a Limited Protection Policy against defects in workmanship or material for 84 months from the date of purchase.



#### WORKMANSHIP & MATERIALS

If this tire becomes unserviceable due to a flaw in workmanship or materials, we will replace it at no charge during the first 50% of tread life.



#### CASING ALLOWANCE & RETREADS

Tires carry a casing allowance for 3 retreads.

<sup>1</sup> See complete Limited Protection Policy on pages 88-94 for details and exclusions.

ITEM#	SIZE	LOAD/SPEED	PLY RATING	MIN. RIM WIDTH (IN)	MAX. RIM WIDTH (IN)	TREAD DEPTH (32NDS)	WEIGHT (LBS)	OVERALL DIAMETER (IN)	SECTION WIDTH (IN)	SINGLE MAX LOAD @ PRESSURE	DUAL MAX LOAD @ PRESSURE	RPM
98480	11R22.5/16	146/143 - K	H	7.5	8.25	32	133.6	41.93	11	6940@123	6390@123	495
98481	11R24.5/16	149/146 - K	H	7.5	8.25	32	142.4	43.94	11	7160@120	6610@120	473
98491	12R22.5/18	152/149 - K	J	8.25	9	32	158.7	42.71	12	7830@135	7160@135	486



# STRONG GUARD® H-MX

PREMIUM | MIXED SERVICE | DRIVE

The new Strong Guard H-MX mixed-service drive features a wide open shoulder tread pattern coupled with the latest compounds and technologies delivering x-treme traction and durability in the most severe applications..

- Featuring 7% wider tread and 10% wider belt layer, the Strong Guard H-MX is purpose built for x-treme off road conditions.
- The proprietary tread design features a lightning center groove for improved heat dissipation, allowing for an enhanced speed rating of "J" 62MPH



## FEATURES & BENEFITS

1

### CUT AND CHIP RESISTANT COMPOUND

Designed specifically to withstand the abuse brought by the rough terrain of mixed service applications.

2

### TRAC-LEDGES

Provide unparalleled traction and mud/debris clean out in x-treme off-road conditions.

3

### CURB PROTECTOR & STONE EJECTORS

Protects the sidewall and casing for damage in mixed-service application.

4

### OPTIMIZED FOOTPRINT AND WIDE TREAD DESIGN

Extends tread life, improves product performance and increases vehicle stability due to a larger contact patch.



## PERFORMANCE PROMISE<sup>1</sup>



### 84-MONTH

These Hercules Strong Guard tires have a Limited Protection Policy against defects in workmanship or material for 84 months from the date of purchase.



### WORKMANSHIP & MATERIALS

If this tire becomes unserviceable due to a flaw in workmanship or materials, we will replace it at no charge during the first 50% of tread life.



### CASING ALLOWANCE & RETREADS

Tires carry a casing allowance for 3 retreads.

<sup>1</sup> See complete Limited Protection Policy on pages 88-94 for details and exclusions.

ITEM#	SIZE	LOAD/SPEED	PLY RATING	MIN. RIM WIDTH (IN)	MAX. RIM WIDTH (IN)	TREAD DEPTH (32NDS)	WEIGHT (LBS)	OVERALL DIAMETER (IN)	SECTION WIDTH (IN)	SINGLE MAX LOAD @ PRESSURE	DUAL MAX LOAD @ PRESSURE	RPM
98482	11R22.5/16	146/143 - J	H	7.5	8.25	30	140.01	41.5	11	6610@120	6005@120	522
98483	11R24.5/16	149/146 - J	H	7.5	8.25	30	150.13	43.94	11	7160@120	6610@120	496



# STRONG GUARD® H-MA

PREMIUM | MIXED SERVICE | ALL-POSITION

The new Strong Guard H-MA is built tough with a rugged 4-rib design offering biting traction coupled with improved handling for heavy load applications both on and off-road, including the refuse industry.

- A deeper tread depth and up to 10% wider tread width extends tread life and increases vehicle stability, including vehicles that demand over 10,000 lbs. load carrying capacity.
- 15% wider steel belts enhance protection of the tire casing off-road and optimizes the footprint under heavy loads for speeds up to "K" 68MPH.



## FEATURES & BENEFITS

**1 CUT AND CHIP RESISTANT COMPOUND**  
Designed specifically to withstand the abuse brought by the rough terrain of mixed-service applications.

**2 PROPRIETARY TREAD DESIGN**  
Large siped tread blocks create an aggressive ribbed design promoting traction and handling.

**3 BITING SHOULDER**  
Allows the tire to dig into tough terrains for increased traction in any conditions.

**4 CURB PROTECTOR & STONE DEFENSE**  
Protect the sidewall and casing from damage in mixed-service applications.



### PERFORMANCE PROMISE<sup>1</sup>



#### 84-MONTH

These Hercules Strong Guard tires have a Limited Protection Policy against defects in workmanship or material for 84 months from the date of purchase.



#### WORKMANSHIP & MATERIALS

If this tire becomes unserviceable due to a flaw in workmanship or materials, we will replace it at no charge during the first 50% of tread life.



#### CASING ALLOWANCE & RETREADS

Tires carry a casing allowance for 3 retreads.

<sup>1</sup> See complete Limited Protection Policy on pages 88-94 for details and exclusions.

ITEM#	SIZE	LOAD/SPEED	PLY RATING	MIN. RIM WIDTH (IN)	MAX. RIM WIDTH (IN)	TREAD DEPTH (32NDS)	WEIGHT (LBS)	OVERALL DIAMETER (IN)	SECTION WIDTH (IN)	SINGLE MAX LOAD @ PRESSURE	DUAL MAX LOAD @ PRESSURE	RPM
98501	11R22.5/16	146/143 - K	H	8.25	7.5	24	121.5	41.93	11	6610@120	6005@120	522
98502	11R24.5/16	149/146 - K	H	8.25	7.5	24	129.8	43.94	11	7160@120	6610@120	496
98499.2	275/70R22.5/18	148/145 - K	J	8.25	9	22	110.01	37.72	10.83	6940@130	6395@130	551
98500	315/80R22.5/20	161/157 - J	L	9	9.75	24	153.2	42.36	12.4	10200@130	9090@130	512



# H-309

REGIONAL | HIGH SCRUB | STEER/ALL-POSITION

## FEATURES & BENEFITS

- Five-rib design promotes even wear in regional applications.
- Enhanced solid shoulder design resists scrub wear and minimizes irregular wear.
- Innovative groove technology maximizes tear resistance while ejectors minimizes stone retention.
- Chip and cut compound.



### PERFORMANCE PROMISE<sup>1</sup>

 **72-MONTH**  **WORKMANSHIP & MATERIALS**  **CASING ALLOWANCE & RETREADS**

<sup>1</sup> See complete Limited Protection Policy on pages 88-94 for details and exclusions.

ITEM#	SIZE	LOAD/SPEED	PLY RATING	RIM WIDTH (IN)	MAX. RIM WIDTH (IN)	TREAD DEPTH (32NDS)	WEIGHT (LBS)	OVERALL DIAMETER (IN)	SECTION WIDTH (IN)	SINGLE MAX LOAD @ PRESSURE	DUAL MAX LOAD @ PRESSURE	RPM
92787	11R22.5/16	148/145M	H	7.50	8.25	19.0	118.48	41.50	10.98	6940@123	6390@123	522
92788	11R24.5/16	149/146M	H	7.50	8.25	19.0	130.38	43.46	10.98	7165@120	6614@120	496
92785.2	295/75R22.5/16	146/143M	H	8.25	8.25	19.0	116.03	39.92	11.73	6610@120	6005@120	540
92782	285/75R24.5/16	147/144M	H	8.25	9.00	19.0	122.13	41.34	11.14	6780@120	6175@120	519

# H-933

WINTER SERVICE | DRIVE

## FEATURES & BENEFITS

- Specialized drive tire designed for enhanced acceleration and braking capability in winter conditions.
- Formulated with unique tread compound that stays pliable in the coldest temperatures.
- Deep tread (27/32nds) and extra-wide footprint delivers long original tread life and stability.
- Unique siping provides interlocking capability for enhanced tread block rigidity and maximizes biting edges for exceptional traction on snow and other surfaces.
- Heavy-duty all-steel casing for excellent retreadability.



### PERFORMANCE PROMISE<sup>1</sup>

 **72-MONTH**  **WORKMANSHIP & MATERIALS**  **CASING ALLOWANCE & RETREADS**  **TRACTION STANDARD**

<sup>1</sup> See complete Limited Protection Policy on pages 88-94 for details and exclusions.

ITEM#	SIZE	LOAD/SPEED	PLY RATING	MIN. RIM WIDTH (IN)	MAX. RIM WIDTH (IN)	TREAD DEPTH (32NDS)	WEIGHT (LBS)	OVERALL DIAMETER (IN)	SECTION WIDTH (IN)	SINGLE MAX LOAD @ PRESSURE	DUAL MAX LOAD @ PRESSURE	RPM
92644	11R22.5/16	146/143L	H	7.50	8.25	27.1	134.83	41.93	10.98	6610@120	6005@120	522
92645	11R24.5/16	149/146L	H	7.50	8.25	27.1	144.40	43.94	10.98	7160@120	6610@120	496
97098	225/70R19.5/14	128/126M	G	6.00	6.75	21.0	69.22	32.17	8.90	3970@110	3750@110	653

## NOTES

---

---

---

---

---

---

---

---

---

---

---

---

---

---

---

---

---

---

---

---

---

---

---

---



# INDUSTRIAL & OTR

## WHEEL LOADERS, MOTOR GRADERS, ARTICULATED DUMP TRUCKS

ITEM #	SIZE	BRAND STYLE	DISTANCE	SPEED AT MAX LOAD	psi	33	36	40	44	47
94714	405/70-20/14	4L13 MULTIPURPOSE	N/A	30MPH	(lbs)					
94715	15.5-25/12	L2 LOADER	250 FEET (ONE WAY)	5MPH	(lbs)	8800	9350	9900	10500	10700
94716	17.5-25/12	L2 LOADER	250 FEET (ONE WAY)	5MPH	(lbs)	10500	11000	11700	12300	12800
94717	20.5-25/16	L2 LOADER	250 FEET (ONE WAY)	5MPH	(lbs)	13900	14800	15700	16500	17100
94718	15.5-25/12	L3 LOADER	250 FEET (ONE WAY)	5MPH	(lbs)	8800	9350	9900	10500	10700
94719.1	17.5-25/12	L3 LOADER	250 FEET (ONE WAY)	5MPH	(lbs)	10500	11000	11700	12300	12800
94720	20.5-25/16	L3 LOADER	250 FEET (ONE WAY)	5MPH	(lbs)	13900	14800	15700	16500	17100
94721	23.5-25/20	L3 LOADER	250 FEET (ONE WAY)	5MPH	(lbs)	17600	18700	19800	20900	22000
94645	17.5R25**	HER HDR 325	2.5 MILES (ONE WAY)	30MPH	(lbs)			7400	7850	8250
94646	20.5R25**	HER HDR 325	2.5 MILES (ONE WAY)	30MPH	(lbs)			9650	10500	11000
94647.1	23.5R25**	HER HDR 325	2.5 MILES (ONE WAY)	30MPH	(lbs)			12300	13200	14300
94645	17.5R25**	HER HDR 325	250 FEET (ONE WAY)	5MPH	(lbs)					
94646	20.5R25**	HER HDR 325	250 FEET (ONE WAY)	5MPH	(lbs)					
94647.1	23.5R25**	HER HDR 325	250 FEET (ONE WAY)	5MPH	(lbs)					

## TELEHANDLERS, COMPACT WHEEL LOADERS

ITEM #	SIZE	BRAND STYLE	DISTANCE	SPEED AT MAX LOAD	psi	18	22	25	29	33
94722	13.00-24/12	G2/L2 TELEHANDLER	UNLIMITED	25MPH	(lbs)	3740	4180	4520	4940	5200
94722	13.00-24/12	G2/L2 TELEHANDLER	250 FEET (ONE WAY)	5MPH	(lbs)					
94724	13.00-24/12	G3/L3 TELEHANDLER	UNLIMITED	25MPH	(lbs)	3740	4180	4520	4940	5200
94724	13.00-24/12	G3/L3 TELEHANDLER	250 FEET (ONE WAY)	5MPH	(lbs)					
94723	14.00-24/12	G2/L2 TELEHANDLER	UNLIMITED	25MPH	(lbs)	4540	5080	5520	5840	6150
94723	14.00-24/12	G2/L2 TELEHANDLER	250 FEET (ONE WAY)	5MPH	(lbs)					
94725	14.00-24/12	G2/L2 TELEHANDLER	UNLIMITED	25MPH	(lbs)	4540	5080	5520	5840	6150
94725	14.00-24/12	G3/L3 TELEHANDLER	250 FEET (ONE WAY)	5MPH	(lbs)					
98364.1	14.00R24*	H-DR 220 G2/L2	UNLIMITED	25MPH	(lbs)				4940	5360
98364.1	14.00R24*	H-DR 220 G2/L2	250 FEET (ONE WAY)	5MPH	(lbs)					

## TRUCK MOUNTED FORKLIFTS

ITEM #	SIZE	BRAND STYLE	SPEED AT MAX LOAD	psi	30	35	40	44	45	50
94710	26X12-12/8	SKS R1 TRACTIONMASTER	5MPH	(lbs)	2250	2450	2650		2840	3000 (8)
94712	29X12.50-15/8	SKS R1 TRACTIONMASTER	5MPH	(lbs)				3400 (8)		
94711	31X15.50-15/8	SKS R1 TRACTIONMASTER	5MPH	(lbs)				2950 (8)		

## WHEEL LOADERS, MOTOR GRADERS, ARTICULATED DUMP TRUCKS CONT.

	50	51	54	58	62	65	69	73	76	80	83	87	91	94
7450 (14)														
		11400	11700	12300 (12)										
		13600 (12)												
		18200 (16)												
		11400	11700	12300 (12)										
		13600 (12)												
		18200 (16)												
		23400	24000 (20)											
		8800	9100 *	9650	10200	10500	11000	11400	12000 **					
		11700	12300 *	12800	13600	14300	14800	15200	16100 **					
		14800	15700 *	16500	17100	18200	18700	19800	20400 **					
				13200	13600	14300	14800	15700 *	16100	16500	17100	17600	18200	18700**
				17600	18200	19300	19800	20900 *	21500	22000	22700	24000	24700	25400 **
				22700	23400	24700	25400	26800 *	27600	28300	29100	30000	30900	32000 **

## TELEHANDLERS, COMPACT WHEEL LOADERS CONT.

	36	40	44	47	50	54	58	62	65	69	73	76	80
5520	5840	6000 (12)											
			9900	10500	11000	11400	11700	12300 (12)					
5520	5840	6000 (12)											
			9900	10500	11000	11400	11700	12300 (12)					
6800 (12)													
			12000	12300	13200	13600	13900	14300	14800	15200	15700	16100 (12)	
6800 (12)													
			12000	12300	13200	13600	13900	14300	14800	15200	15700	16100 (12)	
5840	6150	6600	7150	7400	8050*								
													15200*

Tire load limits at various inflation pressures are based upon Tire and Rim Association (TRA) standards and tables, except where there is no specification established by the TRA. In these few cases, the tire design is based on the European Tire and Rim Technical Organization (ETRTO) whose standards govern these tires designs.



# INDUSTRIAL & OTR CONT.

## BACKHOE

ITEM #	SIZE	BRAND STYLE	SPEED AT MAX LOAD	psi	25	29
94705	16.9-24/12	SUPER LUG ADV R4 BACKHOE	25MPH	(LBS)		
94706	17.5L-24/10	SUPER LUG ADV R4 BACKHOE	25MPH	(lbs)		
94707	19.5L-24/12	SUPER LUG ADV R4 BACKHOE	25MPH	(lbs)		
94708	21L-24/12	SUPER LUG ADV R4 BACKHOE	25MPH	(lbs)		
94704	14.9-24/12	SUPER LUG R4 BACKHOE	25MPH	(lbs)		
94709	16.9-28/12	SUPER LUG R4 BACKHOE	25MPH	(lbs)		
94702	10.5/80-18/10	SUPER LUG R4 BACKHOE	25MPH	(lbs)		
94702	10.5/80-18/10	SUPER LUG R4 BACKHOE	25MPH	(lbs)		
94702	12.5/80-18/12	SUPER LUG R4 BACKHOE	25MPH	(lbs)		
94703	12.5/80-18/12	SUPER LUG R4 BACKHOE	25MPH	(lbs)		
94699	11L-15SL/10	F3 BACKHOE	30MPH	(lbs)		
94700	11L-16SL/12	F3 BACKHOE	30MPH	(lbs)		
94701	14.5/75-16.1SL/10	F3 BACKHOE	N/A	(lbs)	2270	2540
98517	19.5L-24/12	STRONG GUARD B-R4	25MPH	(lbs)		
98519	12.5/80-18/12	STRONG GUARD B-I3	25MPH	(lbs)		
98519	12.5/80-18/12	STRONG GUARD B-I3	25MPH	(lbs)		

## SKID STEER

ITEM #	SIZE	BRAND STYLE	SPEED AT MAX LOAD	psi	30	35
94710	26X12-12/8	SKS R1 TRACTIONMASTER	5MPH	(lbs)	2250	2450
94687	23X8.50-12/6	X-WALL SKS SKID STEER	5MPH	(lbs)	1340	1470
94688.1	26X12-12/10	X-WALL SKS SKID STEER	5MPH	(lbs)	2250	2450
94689	27X8.50-15/6	X-WALL SKS SKID STEER	5MPH	(lbs)		
94685	5.70-12/4	X-WALL SKS SKID STEER	5MPH	(lbs)	965	1060
94683	10-16.5/10	X-WALL SKS SKID STEER	5MPH	(lbs)	2760	3020
94684.1	12-16.5/10	X-WALL SKS SKID STEER	5MPH	(lbs)	3560	3900
94690	31X15.50-15/8	X-WALL SKS SKID STEER	5MPH	(lbs)		
94686	7.00-15/6	X-WALL SKS SKID STEER	5MPH	(lbs)	2120	2320
94691	14-17.5/12	X-WALL SKS SKID STEER	5MPH	(lbs)	4820	5260
94697	15-19.5/14	HAULER SKS SKID STEER	5MPH	(lbs)	6130	6710
94681	10-16.5/8	GRIPPER SKID STEER	5MPH	(lbs)	2760 (4)	3020
94682	12-16.5/10	GRIPPER SKID STEER	5MPH	(lbs)	3560	3900
94692	10-16.5/10	HAULER SKZ SKID STEER	5MPH	(lbs)	2760	3020
94693	12-16.5/12	HAULER SKZ SKID STEER	5MPH	(lbs)	3560	3900
94695	31X15.50-15/8	HAULER SKZ SKID STEER	5MPH	(lbs)		
94694	33X15.50-16.5/14	HAULER SKZ SKID STEER	5MPH	(lbs)		
94696	10-16.5/10	XD44 SKID STEER	5MPH	(lbs)	2760	3020
94698	12-16.5/12	XD44 SKID STEER	5MPH	(lbs)	3560	3900
98518	10-16.5/10	STRONG GUARD S-L2	5MPH	(lbs)	2760	3020
98520	12-16.5/12	STRONG GUARD S-L2	5MPH	(lbs)	3560	3900

Tire load limits at various inflation pressures are based upon Tire and Rim Association (TRA) standards and tables, except where there is no specification established by the TRA. In these few cases, the tire design is based on the European Tire and Rim Technical Organization (ETRTO) whose standards govern these tires designs.

## BACKHOE CONT.

	31	32	33	36	38	40	41	43	51	53	54
					7150 (12)						
6200 (10)			7600 (12)								
		8545 (12)					6400 (12)				
					7850 (12)						
										4300 (10)	
										3000 (10)	
											5842(12)
											4077 (12)
								2900 (10)			
									3450 (12)		
		2760		3000		3200 (10)					
			7600 (12)								
											5842 (12)
											4077 (12)

## SKID STEER CONT.

	40	44	45	50	55	60	65	69	70	75	80
2650			2840	3000 (8)							
1590			1700	1840 (6)							
2650			2840	3000			3600 (10)				
		2500 (6)									
1140			1120	1300	1380	1450 (4)					
3260			3500	3720	3930	4150	4340			4710 (10)	
4220			4520	4810	5080	5340	5600 (10)				
		3750 (8)									
2510			2690	2860	3030	3180 (6)					
5700			6100	6500	6850	7220		7850 (12)			
7250 (8)			7770	8260	8740	9190	9630		10060		11200 (14)
3260			3500	3720	3930	4150 (8)					
4220			4520	4810	5080	5340	5600 (10)				
3260			3500	3720	3930	4150	4340			4710 (10)	
4220			4520	4810	5080	5340	5600				6350 (12)
		3750 (8)									
									6950 (70)		
3260			3500	3720	3930	4150	4340			4710 (10)	
4220			4520	4810	5080	5340	5600				6350 (12)
3260			3500	3720	3930	4150	4340			4710 (10)	
4220			4520	4810	5080	5340	5600				6320 (12)

# GRIPPER SKID STEER

STANDARD SKID STEER | BIAS | OFF ROAD

## FEATURES & BENEFITS

- Excellent medium duty tire provides excellent traction in off-road conditions along with a lower lug-to-void ratio for increased wear.
- Premium chunk-and-tear-resistant compounding for best-in-class durability.
- Two plies heavier than most value offerings.
- Square shoulder design for even wear.



PERFORMANCE PROMISE<sup>1</sup>



60-MONTH

<sup>1</sup> See complete Limited Protection Policy on pages 88-94 for details and exclusions.

ITEM#	SIZE	LOAD INDEX	SPEED SYMBOL/MAX. SPEED	PLY RATING	APPROVED RIM WIDTH	TREAD DEPTH (32NDS)	WEIGHT (LBS)	OVERALL DIAMETER (IN)	SECTION WIDTH	SINGLE MAX LOAD @ PRESSURE
94681	10-16.5/8	129	A2	D	8.25	19.0	49.00	30.10	10.00	4150@60
94682	12-16.5/10	140	A2	E	9.75	23.0	59.00	32.20	12.00	5600@64

# STRONG GUARD S-L2

PREMIUM SKID STEER | BIAS | ON/OFF ROAD

## FEATURES & BENEFITS

- Robust stepped lugs and square profile ensures optimum traction and long wear.
- Broad and reinforced sidewall protects against damage and enhances sidewall stability.
- Specially designed rim guard provides greater protection against wheel damage in the rim flange area.
- Advanced SILICA based tread compound delivers "Chip & Cut" properties made to withstand off the road applications.



PERFORMANCE PROMISE<sup>1</sup>



60-MONTH

<sup>1</sup> See complete Limited Protection Policy on pages 88-94 for details and exclusions.

ITEM#	SIZE	LOAD INDEX	SPEED SYMBOL/MAX. SPEED	PLY RATING	APPROVED RIM WIDTH	TREAD DEPTH (32NDS)	WEIGHT (LBS)	OVERALL DIAMETER (IN)	SECTION WIDTH	SINGLE MAX LOAD @ PRESSURE
98518	10-16.5/10	134	A2	E	8.25	21.4	44.80	30.71	10	4710@75
98520	12-16.5/12	145	A2	F	9.75	25.2	60.00	32.90	12	6320@80

# STRONG GUARD B-R4

STANDARD SKID STEER | BIAS | OFF ROAD

## FEATURES & BENEFITS

- Robust, directional pattern and extensive overlap in the center tread provides excellent traction & tear resistance.
- Wide square shoulders with thick lugs offers stability and support while carrying heavy loads at high speeds.
- Tread reinforcing bar between lugs at center helps to strengthen and stabilize tread.
- Heavy duty casing for impact resistance.



PERFORMANCE PROMISE<sup>1</sup>



60-MONTH

<sup>1</sup> See complete Limited Protection Policy on pages 88-94 for details and exclusions.

ITEM#	SIZE	LOAD INDEX	SPEED SYMBOL/MAX. SPEED	PLY RATING	APPROVED RIM WIDTH	TREAD DEPTH (32NDS)	WEIGHT (LBS)	OVERALL DIAMETER (IN)	SECTION WIDTH	SINGLE MAX LOAD @ PRESSURE
98517	19.5L-24/12	151	A8	F	16.00	34.6	187.3	52.08	19.5	7600@34

# STRONG GUARD B-I3

PREMIUM SKID STEER | BIAS | ON/OFF ROAD

## FEATURES & BENEFITS

- Robust, directional pattern and extensive overlap in the center tread provides excellent traction & tear resistance.
- Wide square shoulders with thick lugs offers stability and support while carrying heavy loads at high speeds.
- Tread reinforcing bar between lugs at center helps to strengthen and stabilize tread.
- Heavy duty casing for impact resistance.



PERFORMANCE PROMISE<sup>1</sup>



60-MONTH

<sup>1</sup> See complete Limited Protection Policy on pages 88-94 for details and exclusions.

ITEM#	SIZE	LOAD INDEX	SPEED SYMBOL/MAX. SPEED	PLY RATING	APPROVED RIM WIDTH	TREAD DEPTH (32NDS)	WEIGHT (LBS)	OVERALL DIAMETER (IN)	SECTION WIDTH	SINGLE MAX LOAD @ PRESSURE
98519	12.5/80-18/12	142	A8	F	9.00	34.6	86.1	38.8	12.5	5842@54



# X-WALL SKS

STANDARD SKID STEER | BIAS | OFF ROAD

## FEATURES & BENEFITS

- All-around tire for high-use, predominantly dirt applications.
- Wide lugs, square shoulders and deep tread combine for optimum traction and long wear.
- Staggered step lugs and middle breaker provide superior mud cleanout.
- Reinforced sidewalls and rim protectors reduce downtime and damage.



PERFORMANCE PROMISE<sup>1</sup>



60-MONTH

<sup>1</sup> See complete Limited Protection Policy on pages 88-94 for details and exclusions.

ITEM#	SIZE	LOAD INDEX	SPEED SYMBOL/MAX. SPEED	PLY RATING	APPROVED RIM WIDTH	TREAD DEPTH (32NDS)	WEIGHT (LBS)	OVERALL DIAMETER (IN)	SECTION WIDTH	SINGLE MAX LOAD @ PRESSURE
94683	10-16.5/10	134	A2	E	8.25	22.0	50.00	30.10	10.00	4710@75
94684	12-16.5/10	140	A2	E	9.75	23.0	67.00	32.30	12.00	5600@64
94691	14-17.5/12	152	A2	F	10.50	39.0	109.00	35.90	15.00	7850@69
94687	23X8.50-12/6	101	A2	C	7.00	18.0	24.00	22.50	8.50	1840@50
94688	26X12-12/10	124	A2	E	10.50	27.0	46.00	25.80	12.00	3600@64
94689	27X8.50-15/6	112	A2	C	7.00	19.0	33.00	26.70	8.50	2500@44
94690	31X15.50-15/8	126	A2	D	13.00	30.0	77.00	31.00	15.50	3750@44
94685	5.70-12/4	93	A2	B	4.50	16.0	17.00	22.30	5.70	1450@60
94686	7.00-15/6	121	A2	C	5.50	20.0	44.00	30.50	7.00	3180@59

# XD44 SKID STEER

PREMIUM SKID STEER | BIAS | ON/OFF ROAD

## FEATURES & BENEFITS

- Ultra-premium severe-duty and hard surface solution.
- Extra-deep L5 tread along with an 80% lug-to-void ratio provides long wear and excellent impact resistance.
- Excellent for foam fill and retreading.
- Reinforced sidewalls and rim protectors.



PERFORMANCE PROMISE<sup>1</sup>



60-MONTH

<sup>1</sup> See complete Limited Protection Policy on pages 88-94 for details and exclusions.

ITEM#	SIZE	LOAD INDEX	SPEED SYMBOL/MAX. SPEED	PLY RATING	APPROVED RIM WIDTH	TREAD DEPTH (32NDS)	WEIGHT (LBS)	OVERALL DIAMETER (IN)	SECTION WIDTH	SINGLE MAX LOAD @ PRESSURE
94696	10-16.5/10	134	A2	E	8.25	50.0	84.00	30.90	10.00	4710@75
94698	12-16.5/12	145	A2	F	9.75	50.0	121.00	32.80	12.00	6350@80

# HAULER SKZ

PREMIUM SKID STEER | BIAS | ON/OFF ROAD

## FEATURES & BENEFITS

- Non-directional, heavy-duty tire delivers excellent mixed surface performance.
- Flat and wide shoulder to shoulder tread design provides exceptional traction and ground contact.
- Deep tread, reinforced sidewalls and rim protectors guard against punctures as well as side impacts.
- Optimized durability and wear on all surfaces.
- Dependable traction moving forward and in reverse.



PERFORMANCE PROMISE<sup>1</sup>



60-MONTH

<sup>1</sup> See complete Limited Protection Policy on pages 88-94 for details and exclusions.

ITEM#	SIZE	LOAD INDEX	SPEED SYMBOL/MAX. SPEED	PLY RATING	APPROVED RIM WIDTH	TREAD DEPTH (32NDS)	WEIGHT (LBS)	OVERALL DIAMETER (IN)	SECTION WIDTH	SINGLE MAX LOAD @ PRESSURE
94692	10-16.5/10	134	A2	E	8.25	39.0	76.00	30.90	10.00	4710@75
94693	12-16.5/12	145	A2	F	9.75	44.0	100.37	32.70	12.00	6350@80
94694	33X15.50-16.5/14	148	A2	G	12.00	44.0	126.00	32.90	15.50	6950@70

# HAULER SKS

BIAS | ON/OFF ROAD

## FEATURES & BENEFITS

- Staggered step lugs and middle breaker provide superior mud clean out.
- Reinforced sidewall and rim protectors reduce downtime and damage.
- Robust traction tread with wide lugs for optimal wear and traction in soft soil conditions.
- Wide lugs, square shoulders, and deep tread combine for optimum traction, long wear and stability.



PERFORMANCE PROMISE<sup>1</sup>



60-MONTH

<sup>1</sup> See complete Limited Protection Policy on pages 88-94 for details and exclusions.

ITEM#	SIZE	LOAD INDEX	SPEED SYMBOL/MAX. SPEED	PLY RATING	APPROVED RIM WIDTH	TREAD DEPTH (32NDS)	WEIGHT (LBS)	OVERALL DIAMETER (IN)	SECTION WIDTH	SINGLE MAX LOAD @ PRESSURE
94697	15-19.5/14	164	A2	G	11.75	35.0	130.00	40.20	15.00	11200@80

# F3 BACKHOE

FRONT BACKHOE | BIAS | ON/OFF ROAD

## FEATURES & BENEFITS

- Robust casing and flat profile reduce crowning for excellent wear and stability.
- Rib design for 2WD offers smooth ride and effective steering.
- Deep tread for maximum usage value.



### PERFORMANCE PROMISE<sup>1</sup>



60-MONTH

<sup>1</sup> See complete Limited Protection Policy on pages 88-94 for details and exclusions.

ITEM#	SIZE	LOAD INDEX	SPEED SYMBOL/MAX. SPEED	PLY RATING	APPROVED RIM WIDTH	TREAD DEPTH (32NDS)	WEIGHT (LBS)	OVERALL DIAMETER (IN)	SECTION WIDTH	SINGLE MAX LOAD @ PRESSURE
94699	11L-15SL/10	118	B	E	15.00	17.0	58.00	30.20	11.00	2900@43
94700	11L-16SL/12	123	B	F	16.00	17.0	56.00	31.60	11.00	3450@51
94701	14.5/75-16.1SL/10	121	A8	E	16.10	21.0	89.00	37.00	14.50	3200@40

# SUPER LUG ADV R4 BACKHOE

STANDARD BACKHOE | BIAS | ON/OFF ROAD

## FEATURES & BENEFITS

- Outstanding for road transportation and job site applications.
- Multi-angle tread lugs and spaded centerline minimize vibration, offering a smooth ride at transportation speeds.
- Staggered step lugs for optimal cleaning and improved traction.



### PERFORMANCE PROMISE<sup>1</sup>



60-MONTH

<sup>1</sup> See complete Limited Protection Policy on pages 88-94 for details and exclusions.

ITEM#	SIZE	LOAD INDEX	SPEED SYMBOL/MAX. SPEED	PLY RATING	APPROVED RIM WIDTH	TREAD DEPTH (32NDS)	WEIGHT (LBS)	OVERALL DIAMETER (IN)	SECTION WIDTH	SINGLE MAX LOAD @ PRESSURE
94705	16.9-24/12	149	A8	F	24.00	34.0	166.00	50.40	13.00	7150@38
94706	17.5L-24/10	144	A8	F	24.00	31.0	160.00	48.90	14.00	6200@31
94707	19.5L-24/12	151	A8	F	24.00	33.0	188.00	52.00	19.50	7600@33
94708	21L-24/12	155	A8	F	24.00	35.0	211.00	54.20	21.00	8850@31

# SUPER LUG R4 BACKHOE

PREMIUM BACKHOE | BIAS | OFF ROAD

## FEATURES & BENEFITS

- Primarily available for 4WD fronts and select rear sizes.
- BiaSquare shoulders and deep tread increase tire life and off-road traction.
- Heavy duty casing for impact resistance.
- Staggered step lugs for optimal cleaning and improved traction.



### PERFORMANCE PROMISE<sup>1</sup>



60-MONTH

<sup>1</sup> See complete Limited Protection Policy on pages 88-94 for details and exclusions.

ITEM#	SIZE	LOAD INDEX	SPEED SYMBOL/MAX. SPEED	PLY RATING	APPROVED RIM WIDTH	TREAD DEPTH (32NDS)	WEIGHT (LBS)	OVERALL DIAMETER (IN)	SECTION WIDTH	SINGLE MAX LOAD @ PRESSURE
94702	10.5/80-18/10	119	A6	E	18.00	28.0	34.55	34.50	10.50	2700@54
94703	12.5/80-18/12	129	A6	F	18.00	37.0	86.00	37.80	12.50	3700@54
94704	14.9-24/12	145	A8	F	24.00	31.0	156.00	48.10	14.90	6400@41
94709	16.9-28/12	152	A8	F	28.00	35.0	212.00	55.80	16.90	7600@37

# SKS R1 TRACTIONMASTER

COMPACT UTILITY | BIAS | OFF ROAD

## FEATURES & BENEFITS

- Aggressive R1 tread provides optimum pulling and tractive effort.
- Great for trenchers and smaller three wheeled forklifts.
- Staggered step lugs for optimal cleaning and improved traction.
- Heavy-duty reinforced sidewall.



### PERFORMANCE PROMISE<sup>1</sup>



60-MONTH

<sup>1</sup> See complete Limited Protection Policy on pages 88-94 for details and exclusions.

ITEM#	SIZE	LOAD INDEX	SPEED SYMBOL/MAX. SPEED	PLY RATING	APPROVED RIM WIDTH	TREAD DEPTH (32NDS)	WEIGHT (LBS)	OVERALL DIAMETER (IN)	SECTION WIDTH	SINGLE MAX LOAD @ PRESSURE
94710	26X12-12/8	119	A2	D	10.50	26	40.00	26.30	12.00	3000@50
94712	29X12.50-15/8	123	A2	D	10.00	23	49.80	29.40	12.50	3400@44
94711	31X15.50-15/8	126	A2	D	13.00	26	64.00	31.70	15.50	3750@44



# 4L I3 MULTIPURPOSE

COMPACT UTILITY | BIAS | ON/ OFF ROAD

## FEATURES & BENEFITS

- Designed primarily for smaller telehandlers and optimum stability under load.
- MPT tread and reinforced center design for maximum support.
- Steep lug angles for traction performance in soft soil conditions.
- Staggered step lugs for optimal cleaning and improved traction.



PERFORMANCE PROMISE<sup>1</sup>



60-MONTH

<sup>1</sup> See complete Limited Protection Policy on pages 88-94 for details and exclusions.

ITEM#	SIZE	LOAD INDEX	SPEED SYMBOL/MAX. SPEED	PLY RATING	APPROVED RIM WIDTH	TREAD DEPTH (32NDS)	WEIGHT (LBS)	OVERALL DIAMETER (IN)	SECTION WIDTH	SINGLE MAX LOAD @ PRESSURE
94714	405/70-20/14	154	A8	G	13.00	33	144.00	42.60	15.94	7450@50

# G3/L3 TELEHANDLER

TELEHANDLER | BIAS | ON/OFF ROAD

## FEATURES & BENEFITS

- Designed to provide excellent hard surface life and deliver traction on softer surfaces when necessary.
- Heavy-duty casing ensures stability and protects against impacts.
- Deep and flat tread profile eliminates crowning for optimum ground contact and overall wear.
- Staggered step lugs for optimal cleaning and improved traction.



PERFORMANCE PROMISE<sup>1</sup>



60-MONTH

<sup>1</sup> See complete Limited Protection Policy on pages 88-94 for details and exclusions.

ITEM#	SIZE	LOAD INDEX	SPEED SYMBOL/MAX. SPEED	PLY RATING	APPROVED RIM WIDTH	TREAD DEPTH (32NDS)	WEIGHT (LBS)	OVERALL DIAMETER (IN)	SECTION WIDTH	SINGLE MAX LOAD @ PRESSURE
94724	13.00-24/12	168	A2	F	8.00	35.0	170.00	51.30	13.00	—
94725	14.00-24/12	166	A2	F	8.00	38.0	183.00	53.30	14.00	—

# G2/L2 TELEHANDLER

TELEHANDLER | BIAS | ON/OFF ROAD

## FEATURES & BENEFITS

- Designed to provide excellent wear for telehandlers operating on hard surfaces.
- Heavy-duty casing ensures stability and protects against impacts.
- Superior performance and ability to withstand heat cycles as well as the additional weight of foam fill.
- Flat tread profile to reduce crowning and provide optimal wear.
- Staggered step lugs for optimal cleaning and improved traction.



PERFORMANCE PROMISE<sup>1</sup>



60-MONTH

<sup>1</sup> See complete Limited Protection Policy on pages 88-94 for details and exclusions.

ITEM#	SIZE	LOAD INDEX	SPEED SYMBOL/MAX. SPEED	PLY RATING	APPROVED RIM WIDTH	TREAD DEPTH (32NDS)	WEIGHT (LBS)	OVERALL DIAMETER (IN)	SECTION WIDTH	SINGLE MAX LOAD @ PRESSURE
94722	13.00-24/12	143	A8	F	8.00	37.0	157.00	50.40	13.00	—
94723	14.00-24/12	147	A8	F	8.00	40.0	182.00	52.80	14.00	—

# L2 LOADER

LOADER | BIAS | ON/OFF ROAD

## FEATURES & BENEFITS

- Robust traction tread with wide lugs for optimal wear and traction in soft soil conditions.
- Heavy-duty casing ensures stability and protects against impacts.
- Deep and flat tread profile eliminates crowning for optimum ground contact and overall wear.
- Staggered step lugs for optimal cleaning and improved traction.



PERFORMANCE PROMISE<sup>1</sup>



60-MONTH

<sup>1</sup> See complete Limited Protection Policy on pages 88-94 for details and exclusions.

ITEM#	SIZE	LOAD INDEX	SPEED SYMBOL/MAX. SPEED	PLY RATING	APPROVED RIM WIDTH	TREAD DEPTH (32NDS)	WEIGHT (LBS)	OVERALL DIAMETER (IN)	SECTION WIDTH	SINGLE MAX LOAD @ PRESSURE
94715	15.5-25/12	168	A2	F	12.00	33	173.00	50.10	15.50	12300@58
94716	17.5-25/12	171	A2	F	14.00	33	191.00	52.60	17.50	13600@51
94717	20.5-25/16	181	A2	H	17.00	33	260.00	59.30	20.50	18200@51

# L3 LOADER

LOADER | BIAS | ON/OFF ROAD

## FEATURES & BENEFITS

- Designed to provide excellent wear for telehandlers operating on hard surfaces.
- Heavy-duty casing ensures stability and protects against impacts.
- Superior performance and ability to withstand heat cycles as well as the additional weight of foam fill.
- Flat tread profile to reduce crowning and provide optimal wear.



PERFORMANCE PROMISE<sup>1</sup>



60-MONTH

<sup>1</sup> See complete Limited Protection Policy on pages 88-94 for details and exclusions.

ITEM#	SIZE	LOAD INDEX	SPEED SYMBOL/MAX. SPEED	PLY RATING	APPROVED RIM WIDTH	TREAD DEPTH (32NDS)	WEIGHT (LBS)	OVERALL DIAMETER (IN)	SECTION WIDTH	SINGLE MAX LOAD @ PRESSURE
94718	15.5-25/12	168	A2	F	12.00	33	200.00	50.50	15.50	12300@58
94719	17.5-25/12	171	A2	F	14.00	33	248.00	54.30	17.50	13600@51
94720	20.5-25/16	181	A2	H	17.00	40	323.00	59.20	20.50	18200@51
94721	23.5-25/20	191	A2	L	19.50	47	487.00	63.80	23.50	24000@54

# H-DR 220 G2/L2

GRADER/LOADER | RADIAL | ON/OFF ROAD

## FEATURES & BENEFITS

- Cut and impact resistant compound protects against daily hazards found on the job site ultimately improving downtime.
- Tread block arrangement; intricate design with calculated rubber distribution improves traction and self-cleaning performance.
- Reinforcing tie bars; increasing stability of the tread blocks reducing deformation while in use.
- Wide multi-purpose tread pattern provides stability and flotation properties for soft or muddy conditions.



PERFORMANCE PROMISE<sup>1</sup>



36-MONTH

<sup>1</sup> See complete Limited Protection Policy on pages 88-94 for details and exclusions.

ITEM#	SIZE	LOAD INDEX	SPEED SYMBOL/MAX. SPEED	PLY RATING	APPROVED RIM WIDTH	TREAD DEPTH (32NDS)	WEIGHT (LBS)	OVERALL DIAMETER (IN)	SECTION WIDTH	SINGLE MAX LOAD @ PRESSURE
98364.1	14.00R24/1*	153	A8	*	10.00	31.5	297.00	53.70	14.00	—

# H-DR 325 E3/L3

LOADER/EARTHMOVER | RADIAL | ON/OFF ROAD

## FEATURES & BENEFITS

- Cut and chip resistant compounding to assist with optimum performance and wear.
- E3/L3 tread design offers superior traction and stability.
- Excellent performance and value for both construction and quarry applications.



PERFORMANCE PROMISE<sup>1</sup>



36-MONTH

<sup>1</sup> See complete Limited Protection Policy on pages 88-94 for details and exclusions.

ITEM#	SIZE	LOAD INDEX	SPEED SYMBOL/MAX. SPEED	PLY RATING	APPROVED RIM WIDTH	TREAD DEPTH (32NDS)	WEIGHT (LBS)	OVERALL DIAMETER (IN)	SECTION WIDTH	SINGLE MAX LOAD @ PRESSURE
94645	17.5R25**	167/182	B/A2	—	14.00	35.3	338.80	52.83	17.50	—
94646	20.5R25**	177/193	B/A2	—	17.00	37.8	506.00	58.39	20.50	—
94647.1	23.5R25**	185/201	B/A2	—	19.50	41.6	690.80	63.31	23.50	—

## NOTES

---

---

---

---

---

---

---

---

---

---

---

---

---

---

---

---

---

---

---

---

---

---

---

---

---

---





# LAWN & GARDEN

# TERRA TRAC® TURF

ALL-PURPOSE | LAWN & GARDEN | NON-HIGHWAY SERVICE

## FEATURES & BENEFITS

- Tread design provides excellent traction with limited turf damage.
- Versatile for any lawn and garden need.
- Balanced profile with ample tread depth.
- Rounded shoulders to help with maneuverability.
- 11 sku's to fit many different applications.



ITEM#	SIZE	PLY RATING	APPROVED RIM WIDTH	WEIGHT (LBS)	OVERALL DIAMETER (IN)	SECTION WIDTH	SINGLE MAX LOAD @ PRESSURE
96815	13X5.00-6/4	B	3.50	4.20	12.90	5.00	440@40
968421	15X6.00-6/2	A	4.50	4.70	14.20	6.00	365@14
96843	16X6.50-8/2	A	5.38	5.75	15.80	6.50	410@14
96817	16X6.50-8/4	B	5.38	5.95	16.00	6.50	615@28
96846	18X8.50-8/2	A	7.00	7.80	17.90	8.50	520@10
96818	18X8.50-8/4	B	7.00	8.10	18.00	8.50	825@22
968472	18X9.50-8/2	A	7.00	11.40	17.50	9.50	615@10
96819	18X9.50-8/4	B	7.00	11.40	17.50	9.50	935@20
96820	20X10.00-10/4	B	8.00	13.42	19.60	10.00	1170@22
96844	20X10.00-8/2	A	7.00	10.50	19.30	10.00	760@10
96845	20X8.00-8/2	A	7.00	10.90	19.30	8.00	600@10

## NOTES



# AGRICULTURE



# AG-TRAC RT45

AGRICULTURAL | RADIAL | R-1W

## FEATURES & BENEFITS

- Mud Diffusers help to break mud and debris free from the tire, providing optimal pulling power.
- Multi-Angle Lugs help improve handling and minimizes vibration, offering a smoother ride between fields.
- Optimized footprint bolstered by the strong flexible casing that helps lower soil compaction.
- A 20% deeper tread ...than the typical R1 design, providing low slip, improved traction and long tire life.



## PERFORMANCE PROMISE<sup>1</sup>



60-MONTH



WORKMANSHIP & MATERIALS



36 MONTH FIELD AND STUBBLE HAZARD

<sup>1</sup> See complete Limited Protection Policy on pages 88-94 for details and exclusions.

ITEM#	SIZE	LOAD/SPEED	MIN RIM WIDTH	MAX RIM WIDTH	TREAD DEPTH (32NDS)	OVERALL DIAMETER (IN)	OVERALL DIAMETER (IN)	SINGLE MAX LOAD @ PRESSURE
98503	380/85R28	133/130 - A8/B	11	13	57	181.2	53.43	4540@23
98504	380/85R30	135/132 - A8/B	11	13	57	190.3	55.43	4800@23
98505	380/85R34	147/147 - A8/B	11	13	57	212.7	59.45	6800@44
98506	420/85R34	142/139 - A8/B	13	15	60	246.9	62.13	5840@23
98507	420/90R30	147/144 - A8/B	13	14	60	242.5	59.76	6800@35
98508	460/85R38	149/146 - A8/B	14	16	64	319.7	68.78	7150@23
98509	480/80R42	156/156 - A8/B	16	16	62	361.5	72.24	8800@35
98510	480/80R46	158/158 - A8/B	16	16	62	390.2	76.22	9350@35
98511	520/85R38	155/152 - A8/B	16	18	68	401.2	72.8	8550@23
98512.1	520/85R42	157/154 - A8/B	16	18	68	438.7	76.81	9100@23

# AG-TRAC I-1

RIB IMPLEMENT | BIAS

## FEATURES & BENEFITS

- Constructed with a strong nylon-cord body that resists impacts and damage to the sidewall.
- Specially formulated tread compound to extend service life and provide protection against the elements.
- The wide tread design offers enhanced flotation and stability in the free-rolling position while minimizing soil compaction.



## PERFORMANCE PROMISE<sup>1</sup>



60-MONTH



WORKMANSHIP & MATERIALS

<sup>1</sup> See complete Limited Protection Policy on pages 88-94 for details and exclusions.

ITEM#	SIZE	MAX SPEED (MPH)	PLY RATING	REC. RIM WIDTH (IN)	TREAD DEPTH 32NDS	WEIGHT (LBS)	OVERALL DIAMETER (IN)	SECTION WIDTH	SINGLE MAX LOAD @ PRESSURE	TYPE
98555	7.60-15SL	30MPH	8	6.0	9.2	22.0	28.9	8.0	2090@52	Tubeless
98556	9.5L-15SL	30MPH	12	7.0	9.2	29.2	30.2	9.7	3200@64	Tubeless
98557	11L-15SL	30MPH	12	8.0	10.0	32.7	31.1	11.0	3200@52	Tubeless
98558.1	12.5L-15SL	30MPH	12	10.0	10.5	38.0	32.7	12.3	3860@52	Tubeless



# SPECIALTY TRAILER & COMMERCIAL LIGHT TRUCK



# STRONG GUARD® ST

SPECIALTY TRAILER | TRAILER

## FEATURES & BENEFITS

- Optimized footprint leads to even pressure distribution for longer tread life and even wear under heavy loads.
- Strong rib design features four (4) circumferential grooves coupled with a strong center rib allows for efficient water channeling and straight-line tracking.
- CoolCourse™ Technology – Temperature control system reduces heat generation to enhance performance at high speeds extending tire life.
- Curb Guard provides extra sidewall protection for all the unexpected tight turns.



### PERFORMANCE PROMISE<sup>1</sup>



ROAD HAZARD



60-MONTH



WORKMANSHIP & MATERIALS

<sup>1</sup> See complete Limited Protection Policy on pages 88-94 for details and exclusions.

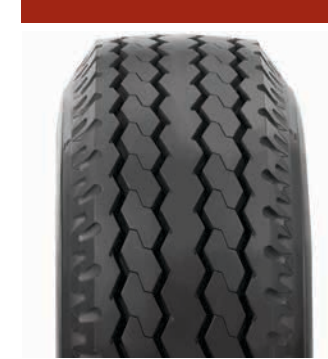
ITEM#	SIZE	LOAD/SPEED	PLY RATING	MIN RIM WIDTH	MAX RIM WIDTH	TREAD DEPTH (32NDS)	WEIGHT (LBS)	OVERALL DIAMETER (IN)	SECTION WIDTH	SINGLE MAX LOAD @ PRESSURE	DUAL MAX LOAD @ PRESSURE	RPM
98492	ST175/80R13/6	91/87 - N	C	4.5	5.5	9	18.6	24.02	6.89	1360@50	1200@50	866
98493	ST205/75R14/8	105/101 - N	D	5	7	9.5	24.3	25.98	8.07	2040@65	1820@65	800
98495	ST205/75R15/8	107/102 - N	D	5	6.5	9.5	26.1	26.94	8.07	2150@65	1870@65	772
98494	ST215/75R14/6	102/98 - N	C	5.5	7	9.5	24.5	26.69	8.46	1870@50	1650@50	779
98496	ST225/75R15/10	117/112 - N	E	6	7	9.5	30.9	28.07	8.86	2830@80	2470@80	741
98497	ST235/80R16/10	124/120 - N	E	6	7.5	9.5	38.7	30.67	9.25	3520@80	3080@80	678
98498	ST235/85R16/12	128/124 - N	F	6	7.5	9.5	44.7	31.67	9.25	3960@95	3520@95	657

# LOW-PRO H-D

SPECIALTY TRAILER | HEAVY DUTY | TRAILER

## FEATURES & BENEFITS

- Designed exclusively for towed low-platform trailer applications.
- ST metric sizing replaces sizes 7-14.5, 8-14.5 and 9-14.5.
- Rigid bias construction promotes optimum stability and durability.



### PERFORMANCE PROMISE<sup>1</sup>



72-MONTH

<sup>1</sup> See complete Limited Protection Policy on pages 88-94 for details and exclusions.

ITEM#	SIZE	LOAD/SPEED	PLY RATING	MIN RIM WIDTH	MAX RIM WIDTH	TREAD DEPTH (32NDS)	WEIGHT (LBS)	OVERALL DIAMETER (IN)	SECTION WIDTH	SINGLE MAX LOAD @ PRESSURE	DUAL MAX LOAD @ PRESSURE	RPM
95272	ST175/85D14.5/12	110L	F	6.00	6.00	8.0	24.91	26.65	6.89	2335@100	—	—
95273	ST205/85D14.5/14	120L	G	6.00	6.00	9.0	25.57	27.83	8.07	3090@116	—	—
95274	ST225/75D14.5/14	125L	G	7.00	7.00	12.0	35.71	27.99	8.86	3605@116	—	—

# STRONG GUARD® C-ST

PREMIUM | ALL-STEEL | TRAILER

## FEATURES & BENEFITS

- Dual groove design – Straight circumferential grooves evacuate water and dampen noise while inner staggered grooves enhance handling and stop-and-go traction.
- Reinforced protection – Stone ejectors and Curb Guard protect the tire casing from the many hazards associated with hauling.
- Siping innovations – Shoulder to Shoulder lateral siping provide maximum wet traction and help evenly distribute heavy loads for long even wear.
- Curb Guard provides extra sidewall protection for all the unexpected tight turns.



### PERFORMANCE PROMISE<sup>1</sup>



84-MONTH



WORKMANSHIP & MATERIALS

<sup>1</sup> See complete Limited Protection Policy on pages 88-94 for details and exclusions.

ITEM#	SIZE	LOAD/SPEED	PLY RATING	MIN RIM WIDTH	MAX RIM WIDTH	TREAD DEPTH (32NDS)	WEIGHT (LBS)	OVERALL DIAMETER (IN)	SECTION WIDTH	SINGLE MAX LOAD @ PRESSURE	DUAL MAX LOAD @ PRESSURE	RPM
98552	ST225/75R15/12	121/118M	F	6.0	7.0	12	49.60	28.11	8.82	3200@96	2910@96	746
98553	ST235/80R16/14	129/125M	G	6.5	7.0	12	56.88	30.83	9.25	4080@110	3640@110	680
98554	ST235/85R16/14	132/127M	G	6.5	7.0	12	59.31	31.38	9.25	4400@110	3860@110	668

# H-901 ST/LT

ALL-STEEL | HIGHWAY<sup>†</sup> | SPECIALTY TRAILER\*

## FEATURES & BENEFITS

- Active sipes improve traction and create biting edges that promote better grip on snowy roads.<sup>†</sup>
- Tread design features a larger footprint to maximize road contact.<sup>†</sup>
- Special tread compound provides exceptional wet handling and braking.
- Durable all-steel construction distributes forces of acceleration, cornering and braking for longer wear.
- Tread design features better footprint and more biting edges for better grip in snow.\*
- Super high tensile steel belts deliver maximum durability.\*



### PERFORMANCE PROMISE<sup>1</sup>



72-MONTH



WORKMANSHIP & MATERIALS

<sup>1</sup> See complete Limited Protection Policy on pages 88-94 for details and exclusions.

ITEM#	SIZE	LOAD/SPEED	PLY RATING	MIN RIM WIDTH	MAX RIM WIDTH	TREAD DEPTH (32NDS)	WEIGHT (LBS)	OVERALL DIAMETER (IN)	SECTION WIDTH	SINGLE MAX LOAD @ PRESSURE	DUAL MAX LOAD @ PRESSURE	RPM
95135*	ST225/75R15/12	121/118L	F	6.00	7.00	14.0	47.44	28.17	8.86	3200@95	2910@95	740
92875*	ST225/90R16/14	129/124L	G	6.00	7.00	14.0	60.63	31.49	8.86	4079@110	3527@110	660
95133*	ST235/80R16/14	128/124L	G	6.50	7.00	14.0	60.68	30.88	9.25	3970@105	3525@105	675
95134*	ST235/85R16/14	132/127L	G	6.50	7.00	14.0	61.34	31.26	9.25	4400@110	3860@110	665
91994†	LT225/75R16/12	119/116N	F	6.00	7.00	14.0	50.33	29.29	8.86	2998@94	2756@94	715
91212†	LT235/85R16/14	126/123L	G	6.50	7.00	14.0	52.45	31.73	9.25	3750@110	3415@110	665
91995†	LT245/75R16/12	123/120N	F	7.00	7.50	14.0	60.92	30.47	9.65	3417@94	3086@94	690

\*H-901LT \*H 901 ST



# TERRA TRAC® CH4

COMMERCIAL | HIGHWAY

## FEATURES & BENEFITS

- Equipped to endure the high torque and heavy loads critical to commercial applications.
- Purpose-built for high-scrub applications, including extra rubber in the construction and a hard-working buttress design.
- Optimized tread design and special polymer compound help withstand weather's worst during any season.
- Profile shape optimizes wear to withstand heavier loads.



## PERFORMANCE PROMISE<sup>1</sup>



72-MONTH



WORKMANSHIP & MATERIALS



45-DAY TRUST OUR RIDE



ROAD HAZARD

<sup>1</sup> See complete Limited Protection Policy on pages 88-94 for details and exclusions.

ITEM#	SIZE	LOAD/SPEED	PLY RATING	MIN RIM WIDTH	MAX RIM WIDTH	TREAD DEPTH (32NDS)	WEIGHT (LBS)	OVERALL DIAMETER (IN)	SECTION WIDTH	SINGLE MAX LOAD @ PRESSURE	DUAL MAX LOAD @ PRESSURE	RPM
96430	185/60R15C/6	94/92T	C	5.50	6.00	13.0	19.77	23.67	7.28	1477@54	1389@54	—
96431	195/75R16C/8	107/105R	D	5.00	6.00	13.0	24.30	27.41	7.68	2149@69	2039@69	—
96432	225/75R16C/10	121/120R	E	6.00	7.00	13.0	33.34	29.22	8.86	3197@83	3086@83	—
96433	235/65R16C/10	121/119R	E	6.50	7.50	13.0	33.41	27.96	9.25	3197@83	2998@83	—
96434	LT215/85R16/10	115/112R	E	5.50	7.00	15.0	33.77	30.32	8.46	2680@80	2470@80	—
98061	LT225/75R16/10	115/112R	E	6.00	7.00	15.0	42.90	29.91	8.86	2680@80	2470@80	—
96437	LT235/80R17/10	120/117R	E	6.00	7.50	15.0	38.69	31.74	9.25	3085@80	2835@80	—
96435	LT235/85R16/10	120/116R	E	6.00	7.50	15.0	37.88	31.66	9.25	3042@80	2778@80	—
96438.1	LT245/70R17/10	119/116R	E	6.50	8.00	15.0	38.54	30.48	9.65	3000@80	2755@80	—
96436	LT245/75R16/10	120/116S	E	6.50	8.00	15.0	38.25	30.40	9.65	3042@80	2778@80	—
96439	LT245/75R17/10	121/118S	E	6.50	7.50	15.0	40.37	31.43	9.65	3195@80	2910@80	—
98062	LT265/70R17/10	121/118R	E	7.00	9.00	15.0	55.70	31.57	10.43	3195@80	2910@80	—
96440	LT275/70R18/10	125/122R	E	7.00	8.50	15.0	46.15	33.12	10.83	3640@80	3305@80	—

## NOTES



# IRONMAN

MEDIUM TRUCK	IRONMAN	LONG HAUL	REGIONAL/P&D	ON/OFF ROAD	WINTER
	STEER	I-61S	—	—	—
	ALL-POSITION	—	I-19A I-502 I-181 I-192	I-301 I-402	—
	DRIVE	I-208	I-208 I-37D	—	—
	TRAILER	I-48T	I-502 I-181 I-190 I-191 I-192	—	—





# MEDIUM TRUCK

TIRE SIZE	USAGE	psi	70	75	80	85	90	95	100	105	110	115	120	123	125	130	135
8.25R15TT	DUAL	(lbs)	2700	2810	2930	3040	3150	3260	3360	3525	3635	3745	3860 (G)				
	SINGLE	(lbs)	2780	2930	3080	3200	3340	3470	3590	3750	3860	3970	4080 (G)				
10.00R15	DUAL	(lbs)	3660	3830	3980	4130	4300	4470	4640	4805	4990	5175	5355	6395 (J)			
	SINGLE	(lbs)	3780	3980	4170	4370	4540	4715	4890	5070	5270	5470	5675	6940 (J)			
215/75R17.5	DUAL	(lbs)			3195	3345	3500	3650	3795	3945	4095	4220	4390		4540 (H)		
	SINGLE	(lbs)			3375	3540	3695	3860	4010	4180	4330	4495	4650		4805 (H)		
235/75R175.5	DUAL	(lbs)			3970	4170	4365	4555	4745	4935	5125	5310	5495		5675 (H)		
	SINGLE	(lbs)			4200	4410	4615	4820	5025	5225	5420	5620	5810		6005 (H)		
245/70R17.5	DUAL	(lbs)			3970	4190	4365	4585	4760	4915	5135	5315	5510		5675 (J)		
	SINGLE	(lbs)			4210	4455	4630	4870	5025	5200	5445	5620	5840		6005 (J)		
225/70R19.5	DUAL	(lbs)	2720	2860	3000	3115	3245	2415	3490	3615	3750 (G)						
	SINGLE	(lbs)	2895	3040	3195	3315	3450	3640	3715	3845	3970 (G)						
245/70R19.5	DUAL	(lbs)	3070	3220	2415	3515	3655	3860	3940	4075	4300 (G)	4520	4675 (H)				
	SINGLE	(lbs)	3265	3425	3640	3740	3890	4080	4190	4335	4540 (G)	4740	4940 (H)				
265/70R19.5	DUAL	(lbs)	3430	3600	3750	3930	4095	4300	4405	4415	4675 (G)			4675 (H)			
	SINGLE	(lbs)	3650	3830	3970	4180	4355	4540	4685	4850	5070 (G)			6005 (H)			
10.00R20TT	DUAL	(lbs)	4380	4580	4760	4950	5205	5415	5625	5840	5895	5950	6005 (H)				
	SINGLE	(lbs)	4530	4770	4990	5220	5510	5730	5950	6175	6320	6465	6610 (H)				
9R22.5	DUAL	(lbs)	3270	3410	3550	3690	3860	4005	4150	4300	4425	4550	4675 (G)				
	SINGLE	(lbs)	3370	3560	3730	3890	4080	4235	4390	4540	4675	4810	4940 (G)				
10R22.5	DUAL	(lbs)	3860	4045	4230	4410	4585	4760	4940	5075	5210	5355	5415		5625	5840 (H)	
	SINGLE	(lbs)	4080	4280	4480	4675	4850	5025	5205	5360	5515	5675	5730		5950	6170 (H)	
255/70R22.5	DUAL	(lbs)	3585	3765	3970	4110	4275	4410	4455	4610	4675	4915	5070 (H)				
	SINGLE	(lbs)	3815	4005	4190	4370	4550	4675	4895	5065	5205	5400	5510 (H)				
275/70R22.5	DUAL	(lbs)	3865	4120	4315	4560	4745	4990	5170	5350	5585	5760	5995		6170	6395	6940 (J)
	SINGLE	(lbs)	4200	4475	4685	4955	5155	5420	5615	5810	6065	6255	6510		6700	6940	7830 (J)
295/75R22.5	DUAL	(lbs)	4095	4300	4540	4690	4885	5070	5260	5440	5675 (G)	5795	6005 (H)				
	SINGLE	(lbs)	4500	4725	4940	5155	5370	5510	5780	5980	6175 (G)	6370	6610 (H)				
11R22.5	DUAL	(lbs)	4380	4580	4760	4950	5205	5415	5625	5840	5895 (G)	5950	6005 (H)	6390 (H)			
	SINGLE	(lbs)	4530	4770	4990	5220	5510	5730	5950	6175	6320 (G)	6465	6610 (H)	6940 (H)			
12R22.5	DUAL	(lbs)	4780	4990	5190	5390	5675	5785	5895	6005	6265	6525	6780		6950	7070	7160 (J)
	SINGLE	(lbs)	4940	5200	5450	5690	6005	6205	6405	6610	6870	7130	7390		7570	7710	7830 (J)
315/80R22.5	DUAL	(lbs)	5095	5345	5675	5840	6070	6395	6545	6770	6940	7210	7610		7910	8270 (L)	9370 (M)
	SINGLE	(lbs)	5600	5875	6175	6415	6670	6940	7190	7440	7610	7920	8270		8690	9090 (L)	11000 (M)
385/65R22.5	SINGLE	(lbs)	6380	6720	6940	7350	7650	8050	8230	8510	8820	9050	9370		9650	9920 (L)	
425/65R22.5	SINGLE	(lbs)	7590	7990	8270	8740	9100	9370	9790	10100	10500	10700	11400 (L)				
445/65R22.5	SINGLE	(lbs)	8230	8660	9090	9480	9870	10200	10600	11000	11400	11700	12300			12775 (M)	
12.00R24TT	DUAL	(lbs)	6120	6390	6650	6910	7160	7390	7610	7830	8050	8300	8540			9090 (L)	
	SINGLE	(lbs)	6330	6660	6980	7280	7580	8050	8310	8570	8820	9100	9370			9920 (L)	
285/75R24.5	DUAL	(lbs)	4135	4340	4540	4740	4930	5205	5310	5495	5675 (G)	5860	6175 (H)				
	SINGLE	(lbs)	4545	4770	4940	5210	5450	5675	5835	6040	6175 (G)	6440	6780 (H)				
11R24.5	DUAL	(lbs)	4660	4870	5070	5260	5510	5675	5840	6005	6205 (G)	6405	6610 (H)				
	SINGLE	(lbs)	4820	5070	5310	5550	5840	6095	6350	6610	6790 (G)	6970	7160 (H)				

Tire load limits at various inflation pressures are based upon Tire and Rim Association (TRA) standards and tables, except where there is no specification established by the TRA. In these few cases, the tire design is based on the European Tire and Rim Technical Organization (ETRTO) whose standards govern these tires designs.

# I-19A

ALL-POSITION | M+S

## FEATURES & BENEFITS

- Scrub resistance achieved through upgraded compounds and solid shoulder ribs evenly distributing vehicle weight for longer tire life.
- Duel groove defense wavy outer grooves maximize tearing resistance while stone ejector platforms protect the belts from stone drilling.
- Enhanced siping channels water from the tread for enhanced wet handling and braking and protect grooves from onset of irregular wear.
- Curb guard helps protect the sidewall from impacts and damage.



Constructed with EcoFT, an EPA Smartway verified technology



### PERFORMANCE PROMISE<sup>1</sup>



72-MONTH



WORKMANSHIP & MATERIALS



CASING ALLOWANCE & RETREADS

<sup>1</sup> See complete Limited Protection Policy on pages 88-94 for details and exclusions.

ITEM#	SIZE	LOAD/SPEED	PLY RATING	MIN RIM WIDTH	MAX RIM WIDTH	TREAD DEPTH (32NDS)	WEIGHT (LBS)	OVERALL DIAMETER (IN)	SECTION WIDTH	SINGLE MAX LOAD @ PRESSURE	DUAL MAX LOAD @ PRESSURE	RPM
986311	11R22.5/16	148/145M	H	7.50	8.25	18	115.70	41.50	11.00	6940@123	6390@123	501
98636	11R24.5/16	149/146M	H	7.50	8.25	18	124.40	43.50	11.00	7160@120	6610@120	478
98621	215/75R17.5/16	135/133L	H	6.00	6.75	16.5	59.40	30.20	8.30	4805@123	4540@123	690
986401	225/70R19.5/14	128/126N	G	6.75	7.50	16.5	63.30	32.00	8.90	3970@110	3750@110	655
98622	235/75R17.5/18	143/141L	J	6.75	7.50	16.5	66.20	31.40	9.50	6005@128	5675@128	667
98623	245/70R17.5/18	143/141J	J	6.75	7.50	17.5	75.20	31.10	9.80	6005@128	5675@128	669
98642	245/70R19.5/16	136/134N	H	7.50	8.25	17.5	77.30	33.10	9.80	4940@120	4675@120	633
986201	255/70R22.5/16	140/137M	H	7.50	8.25	18	91.30	36.60	10.00	5510@120	5070@120	552
98644	265/70R19.5/16	143/141K	H	7.50	8.25	17.5	82.80	34.20	10.30	6005@123	5675@123	612
98615	285/75R24.5/14	144/141M	G	8.25	9.00	18	115.70	41.40	11.10	6175@110	5675@110	502
98625	295/75R22.5/14	144/141M	G	8.25	9.00	18	113.00	39.80	11.50	6175@110	5675@110	515
98626	295/75R22.5/16	146/143M	H	8.25	9.00	18	113.70	39.80	11.50	6610@120	6005@120	515

# I-48T

LONG HAUL | TRAILER

## FEATURES & BENEFITS

- Wide contact patch reduces trailer sway and tread squirm to promote uniform wear.
- Fuel savings compound minimizes heat generation to reduce rolling resistance in free rolling position.
- Multi-rib sipes optimizes rib contact pressure to combat uneven wear and improve wet handling.
- Casting protection stone ejectors protect the integrity of the belts while curb guards protect from sidewall impacts and damage.



Constructed with EcoFT, an EPA Smartway verified technology



### PERFORMANCE PROMISE<sup>1</sup>



72-MONTH



WORKMANSHIP & MATERIALS



CASING ALLOWANCE & RETREADS

<sup>1</sup> See complete Limited Protection Policy on pages 88-94 for details and exclusions.

ITEM#	SIZE	LOAD/SPEED	PLY RATING	MIN RIM WIDTH	MAX RIM WIDTH	TREAD DEPTH (32NDS)	WEIGHT (LBS)	OVERALL DIAMETER (IN)	SECTION WIDTH	SINGLE MAX LOAD @ PRESSURE	DUAL MAX LOAD @ PRESSURE	RPM
98630	11R22.5/14	144/142M	G	7.50	8.25	14	106.00	41.50	11.00	6175@105	5840@105	501
98635	11R24.5/14	146/143M	G	7.50	8.25	14	114.20	43.50	11.00	6610@105	6005@105	478
98618	285/75R24.5/14	144/141M	G	8.25	9.00	14	110.20	41.40	11.10	6175@110	5675@110	502
98624	295/75R22.5/14	144/141M	G	8.25	9.00	14	104.40	39.50	11.50	6175@110	5675@110	521

# I-37D

OPEN SHOULDER DRIVE | REGIONAL/URBAN | M+S

## FEATURES & BENEFITS

- Stone ejectors protect the casing from stone drilling.
- Open shoulder tread design promotes self-cleaning and water evacuation to enhance traction in various weather and road conditions.
- Block rigidity through lateral lug siping and lug tie-bars help prevent the onset of irregular wear.
- Wider tread width extends tread life, creates more traction and increases vehicle stability due to a larger contact patch.



### PERFORMANCE PROMISE<sup>1</sup>



72-MONTH



WORKMANSHIP & MATERIALS



CASING ALLOWANCE & RETREADS

<sup>1</sup> See complete Limited Protection Policy on pages 88-94 for details and exclusions.

ITEM#	SIZE	LOAD/SPEED	PLY RATING	MIN RIM WIDTH	MAX RIM WIDTH	TREAD DEPTH (32NDS)	WEIGHT (LBS)	OVERALL DIAMETER (IN)	SECTION WIDTH	SINGLE MAX LOAD @ PRESSURE	DUAL MAX LOAD @ PRESSURE	RPM
98633	11R22.5/16	148/145L	H	7.50	8.25	26	125.40	41.50	11.00	6940@123	6390@123	495
98638	11R24.5/16	149/146L	H	7.50	8.25	26	134.40	43.50	11.00	7160@120	6610@120	473
98641	225/70R19.5/14	128/126N	G	6.75	7.50	19.5	65.70	32.00	8.90	3970@110	3750@110	655
98643	245/70R19.5/16	136/134N	H	7.50	8.25	20	78.80	33.10	9.80	4940@120	4675@120	633
98617	285/75R24.5/14	144/141L	G	8.25	9.00	26	123.50	41.60	11.10	6175@110	5675@110	500
98627	295/75R22.5/14	144/141L	G	8.25	9.00	26	120.50	40.30	11.50	6175@110	5675@110	515

# I-61S

LONG HAUL | STEER

## FEATURES & BENEFITS

- Optimized footprint via PCST technology minimizes deformation and heat generation under load, creating a stable footprint for extended mileage and even wear.
- Decoupling grooves help resist the onset of irregular shoulder wear in long haul applications.
- 360 siping slanted sipes improve traction by cutting through water on the highway, while micro-sipes help fight the onset of irregular wear.
- Fuel saving compound reduces rolling resistance and improves mileage performance.



Constructed with EcoFT, an EPA Smartway verified technology



### PERFORMANCE PROMISE<sup>1</sup>



72-MONTH



WORKMANSHIP & MATERIALS



CASING ALLOWANCE & RETREADS

<sup>1</sup> See complete Limited Protection Policy on pages 88-94 for details and exclusions.

ITEM#	SIZE	LOAD/SPEED	PLY RATING	MIN RIM WIDTH	MAX RIM WIDTH	TREAD DEPTH (32NDS)	WEIGHT (LBS)	OVERALL DIAMETER (IN)	SECTION WIDTH	SINGLE MAX LOAD @ PRESSURE	DUAL MAX LOAD @ PRESSURE	RPM
98632	11R22.5/16	148/145M	H	7.50	8.25	18	115.70	41.50	11.00	6940@123	6390@123	501
986371	11R24.5/16	149/146M	H	7.50	8.25	18	124.40	43.50	11.00	7160@120	6610@120	478
98619	285/75R24.5/16	147/144M	H	8.25	9.00	18	115.50	41.40	11.10	6780@120	6175@120	502
98629	295/75R22.5/16	146/143M	H	8.25	9.00	18	113.70	39.80	11.50	6610@120	6005@120	515



# I-502

REGIONAL | DEEP TREAD | ALL-POSITION

## FEATURES & BENEFITS

- Premium all-position tire for both steer and trailer applications.
- Five-rib design delivers excellent mileage and shoulder wear resistance on steer axle use.
- Deep tread yields longer mileage in high scrub applications.
- Solid wide shoulder promotes durability and smooth, even wear.



Constructed with EcoFT, an EPA Smartway verified technology



### PERFORMANCE PROMISE<sup>1</sup>



60-MONTH



WORKMANSHIP & MATERIALS



CASING ALLOWANCE & RETREADS

<sup>1</sup> See complete Limited Protection Policy on pages 88-94 for details and exclusions.

ITEM#	SIZE	LOAD/SPEED	PLY RATING	MIN RIM WIDTH	MAX RIM WIDTH	TREAD DEPTH (32NDS)	WEIGHT (LBS)	OVERALL DIAMETER (IN)	SECTION WIDTH	SINGLE MAX LOAD @ PRESSURE	DUAL MAX LOAD @ PRESSURE	RPM
91925	11R22.5/16	148/145L	H	7.50	8.25	22.7	121.16	41.50	11.00	6940@123	6390@123	201
91927	11R24.5/16	149/146L	H	7.50	8.25	22.7	130.07	43.46	11.00	7160@120	6610@120	478
92400	275/70R22.5/18	152/148K	J	8.25	9.00	22.7	115.30	37.72	10.83	7830@135	6940@135	556
91928	285/75R24.5/14	144/141L	G	8.25	8.25	22.7	123.46	41.34	11.22	6175@110	5675@110	503
91929	295/75R22.5/14	144/141L	G	8.25	9.00	22.7	119.33	40.16	11.61	6175@110	5675@110	521
91931	315/80R22.5/20	157/154L	L	9.00	9.75	21.4	138.45	42.36	12.40	9090@130	8270@130	490
92762	315/80R22.5/22	164/158K	M	9.00	9.75	22.0	141.09	42.20	12.40	11000@138	9370@138	490

# I-192

REGIONAL | ALL-POSITION

## FEATURES & BENEFITS

- Solid shoulder five-rib design delivers increased mileage and shoulder wear resistance in regional steer axle use.
- Regional all-position rib tire suitable for application in all wheel positions.
- Strong casing yields maximum stability and alleviates abnormal wear in all positions.
- Active sipes for improved traction.



### PERFORMANCE PROMISE<sup>1</sup>



60-MONTH



WORKMANSHIP & MATERIALS



CASING ALLOWANCE & RETREADS

<sup>1</sup> See complete Limited Protection Policy on pages 88-94 for details and exclusions.

ITEM#	SIZE	LOAD/SPEED	PLY RATING	MIN RIM WIDTH	MAX RIM WIDTH	TREAD DEPTH (32NDS)	WEIGHT (LBS)	OVERALL DIAMETER (IN)	SECTION WIDTH	SINGLE MAX LOAD @ PRESSURE	DUAL MAX LOAD @ PRESSURE	RPM
94441	10R22.5/16	144/142L	H	6.75	7.50	18.0	111.16	40.10	10.00	6170@130	5840@130	520
94440	9R22.5/14	136/134M	G	6.00	7.50	17.0	85.87	38.30	9.00	4940@120	4675@120	550

# I-181

REGIONAL | ALL-POSITION

## FEATURES & BENEFITS

- All-position rib tire.
- Five-rib design delivers long mileage and shoulder wear resistance on steer axle use.
- Excellent directional stability that alleviates abnormal wear.
- Micro-sipes fight onset of irregular wear and provide better mileage.



### PERFORMANCE PROMISE<sup>1</sup>



60-MONTH



WORKMANSHIP & MATERIALS



CASING ALLOWANCE & RETREADS

<sup>1</sup> See complete Limited Protection Policy on pages 88-94 for details and exclusions.

ITEM#	SIZE	LOAD/SPEED	PLY RATING	MIN RIM WIDTH	MAX RIM WIDTH	TREAD DEPTH (32NDS)	WEIGHT (LBS)	OVERALL DIAMETER (IN)	SECTION WIDTH	SINGLE MAX LOAD @ PRESSURE	DUAL MAX LOAD @ PRESSURE	RPM
95986	10.00R20/16TT	146/143K	H	7.50	8.00	18.9	120.59	41.49	10.00	6610@120	6005@120	502
95987	12R22.5/18	152/149L	J	8.25	9.00	19.5	127.34	42.72	12.00	7830@135	7160@135	486

# I-208

CLOSED SHOULDER | DRIVE

## FEATURES & BENEFITS

- Premium closed shoulder design for drive axle.
- Solid shoulder provides superior stability and resistance to irregular wear.
- Heavy-duty all-steel casing for excellent retreadability and long life.



Constructed with EcoFT, an EPA Smartway verified technology



### PERFORMANCE PROMISE<sup>1</sup>



60-MONTH



WORKMANSHIP & MATERIALS



CASING ALLOWANCE & RETREADS

<sup>1</sup> See complete Limited Protection Policy on pages 88-94 for details and exclusions.

ITEM#	SIZE	LOAD/SPEED	PLY RATING	MIN RIM WIDTH	MAX RIM WIDTH	TREAD DEPTH (32NDS)	WEIGHT (LBS)	OVERALL DIAMETER (IN)	SECTION WIDTH	SINGLE MAX LOAD @ PRESSURE	DUAL MAX LOAD @ PRESSURE	RPM
86212	11R22.5/14	144/142L	G	7.50	8.25	26.0	125.21	41.50	11.00	6175@105	5840@105	501
86213	11R22.5/16	148/145L	H	7.50	8.25	26.0	127.16	41.50	11.00	6940@123	6390@123	501
86214	11R24.5/14	146/143L	G	7.50	8.25	26.0	135.08	43.94	11.00	6610@105	6005@105	478
86215	11R24.5/16	149/146L	H	7.50	8.25	26.0	137.23	43.94	11.00	7160@120	6610@120	478
97879	225/70R19.5/14	128/126L	G	6.00	6.75	19.5	65.03	32.05	8.86	3970@110	3750@110	655
86216	285/75R24.5/14	144/141L	G	8.25	8.25	26.0	128.11	41.57	11.22	6175@110	5675@110	503
86218	295/75R22.5/14	144/141L	G	8.25	9.00	26.0	122.30	40.16	11.61	6175@110	5675@110	521

# I-190

LOW PLATFORM | TRAILER

## FEATURES & BENEFITS

- Closed and wide shoulder design increases lateral stability and promotes even wear.
- Stone ejectors help prevent stone drilling, protecting the casing.
- Zig-zag groove design improves handling.
- Multi-point edged grooves heighten performance in both wet and dry conditions.



### PERFORMANCE PROMISE<sup>1</sup>



60-MONTH  
PROTECTION POLICY



WORKMANSHIP  
& MATERIALS



CASING ALLOWANCE  
& RETREADS

<sup>1</sup> See complete Limited Protection Policy on pages 88-94 for details and exclusions.

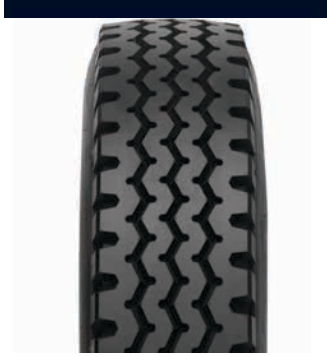
ITEM#	SIZE	LOAD/SPEED	PLY RATING	MIN RIM WIDTH	MAX RIM WIDTH	TREAD DEPTH (32NDS)	WEIGHT (LBS)	OVERALL DIAMETER (IN)	SECTION WIDTH	SINGLE MAX LOAD @ PRESSURE	DUAL MAX LOAD @ PRESSURE	RPM
95466	8.25R15/14TT	129/127L	G	6.00	7.00	16.0	81.48	33.30	8.25	4080@120	3860@120	635

# I-301

MIXED SERVICE | ON/OFF ROAD | ALL-POSITION

## FEATURES & BENEFITS

- Special tread compound resists chips, cuts and tears.
- Three center ribs ensure good directional stability, even wear and a smooth ride.
- Sidewall reinforcement with special compound protects against scuffing and impact.
- Heavy-duty, all-steel casing for excellent retreadability.



### PERFORMANCE PROMISE<sup>1</sup>



60-MONTH  
PROTECTION POLICY



WORKMANSHIP  
& MATERIALS



CASING ALLOWANCE  
& RETREADS

<sup>1</sup> See complete Limited Protection Policy on pages 88-94 for details and exclusions.

ITEM#	SIZE	LOAD/SPEED	PLY RATING	MIN RIM WIDTH	MAX RIM WIDTH	TREAD DEPTH (32NDS)	WEIGHT (LBS)	OVERALL DIAMETER (IN)	SECTION WIDTH	SINGLE MAX LOAD @ PRESSURE	DUAL MAX LOAD @ PRESSURE	RPM
87775	11R22.5/16	148/145M	H	7.50	8.25	21.2	123.72	41.49	11.00	6940@123	6390@123	501
87777.1	11R24.5/16	149/146L	H	7.50	8.25	21.2	133.58	43.46	11.00	7160@120	6610@120	478
90826	12.00R24/20TTF	160/157K	L	8.50	9.00	23.9	174.42	48.27	12.00	9920@131	9090@131	433
95988	12R24.5/18	154/151L	J	9.00	9.00	21.4	151.48	44.68	12.00	8270@135	7610@135	468
90825	315/80R22.5/20	157/154M	L	9.00	9.75	20.8	143.74	42.36	12.40	9090@130	8270@130	490

# I-191

LOW PLATFORM | TRAILER

## FEATURES & BENEFITS

- Wide, semi-closed shoulder aids in even wear and stability.
- Stone ejectors help prevent stone drilling, protecting the casing.
- Zig-zag groove design improves handling.
- Multi-point edged grooves heighten performance in both wet and dry conditions.



### PERFORMANCE PROMISE<sup>1</sup>



60-MONTH  
PROTECTION POLICY



WORKMANSHIP  
& MATERIALS



CASING ALLOWANCE  
& RETREADS

<sup>1</sup> See complete Limited Protection Policy on pages 88-94 for details and exclusions.

ITEM#	SIZE	LOAD/SPEED	PLY RATING	MIN RIM WIDTH	MAX RIM WIDTH	TREAD DEPTH (32NDS)	WEIGHT (LBS)	OVERALL DIAMETER (IN)	SECTION WIDTH	SINGLE MAX LOAD @ PRESSURE	DUAL MAX LOAD @ PRESSURE	RPM
95467	10.00R15/18TT	148/145K	J	7.00	8.00	22.0	110.25	36.50	10.00	6940@123	6395@123	580

# I-402

MIXED SERVICE | WIDE BASE | ALL-POSITION

## FEATURES & BENEFITS

- Designed specifically for work trucks.
- Durable construction and deep tread are ideal for on- and off-road services.
- Tear-resistant compound guards against abuse from off-road applications.
- Deep tread yields longer mileage.



### PERFORMANCE PROMISE<sup>1</sup>



60-MONTH  
PROTECTION POLICY



WORKMANSHIP  
& MATERIALS



CASING ALLOWANCE  
& RETREADS

<sup>1</sup> See complete Limited Protection Policy on pages 88-94 for details and exclusions.

ITEM#	SIZE	LOAD/SPEED	PLY RATING	MIN RIM WIDTH	MAX RIM WIDTH	TREAD DEPTH (32NDS)	WEIGHT (LBS)	OVERALL DIAMETER (IN)	SECTION WIDTH	SINGLE MAX LOAD @ PRESSURE	DUAL MAX LOAD @ PRESSURE	RPM
91916	315/80R22.5/20	157/154K	L	9.00	9.75	22.0	138.45	42.36	12.40	9090@130	8270@130	490
91917	385/65R22.5/20	160K	L	11.75	12.25	22.7	175.49	42.20	15.16	9920@130	—	495
91920	425/65R22.5/20	165K	L	12.25	13.00	22.7	201.28	44.25	16.73	11340@120	—	472
91921	445/65R22.5/20	169K	L	13.00	14.00	22.7	203.49	45.28	17.52	12775@120	—	462





# DYNATRAC

MEDIUM TRUCK	DYNATRAC	LONG HAUL	REGIONAL/P&D	ON/OFF ROAD	WINTER
STEER	RL280+	—	—	—	—
ALL-POSITION	—	RA200 RD240	MA400 MA440	—	—
DRIVE	DL380	DL380 DT340 DT320	—	—	—
TRAILER	RF110+	RA200 RD240	—	—	—





# MEDIUM TRUCK

TIRE SIZE	USAGE	psi	70	75	80	85	90	95	100	105	110	115	120	123	125	130	135
215/75R17.5	DUAL	(lbs)			3195	3345	3500	3650	3795	3945	4095	4220	4390		4540 (H)		
	SINGLE	(lbs)			3375	3540	3695	3860	4010	4180	4330	4495	4650		4805 (H)		
235/75R175.5	DUAL	(lbs)			3970	4170	4365	4555	4745	4935	5125	5310	5495		5675 (J)		
	SINGLE	(lbs)			4200	4410	4615	4820	5025	5225	5420	5620	5810		6005 (J)		
10R17.5	DUAL	(lbs)				3640	3785	3930	4080	4235	4390	4540			5675 (J)		
	SINGLE	(lbs)				3860	4005	4150	4300	4470	4640	4805			6005 (J)		
8R19.5	DUAL	(lbs)	2460	2570	2680	2785	2890	3000	3100	3200	3305 (F)						
	SINGLE	(lbs)	2540	2680	2835	2955	3075	3195	3305	3415	3525 (F)						
225/70R19.5	DUAL	(lbs)	2720	2860	3000	3115	3245	2415	3490	3615	3750 (G)						
	SINGLE	(lbs)	2895	3040	3195	3315	3450	3640	3715	3845	3970 (G)						
245/70R19.5	DUAL	(lbs)	3070	3220	2415	3515	3655	3860	3940	4075	4300	4520	4675 (H)				
	SINGLE	(lbs)	3265	3425	3640	3740	3890	4080	4190	4335	4540	4740	4940 (H)				
265/70R19.5	DUAL	(lbs)	3430	3600	3750	3930	4095	4300	4405	4415	4675	4860	5070		5675 (J)		
	SINGLE	(lbs)	3650	3830	3970	4180	4355	4540	4685	4850	5070	5340	5510		6005 (J)		
10R22.5	DUAL	(lbs)	3860	4045	4230	4410	4585	4760	4940	5075	5210	5355 (G)					
	SINGLE	(lbs)	4080	4280	4480	4675	4850	5025	5205	5360	5515	5675 (G)					
255/70R22.5	DUAL	(lbs)	3585	3765	3970	4110	4275	4410	4455	4610	4675	4915	5070 (H)				
	SINGLE	(lbs)	3815	4005	4190	4370	4550	4675	4895	5065	5205	5400	5510 (H)				
275/70R22.5	DUAL	(lbs)	3865	4120	4315	4560	4745	4990	5170	5350	5585	5760	5995		6170	6395 (H)	
	SINGLE	(lbs)	4200	4475	4685	4955	5155	5420	5615	5810	6065	6255	6510		6700	6940 (H)	
295/75R22.5	DUAL	(lbs)	4095	4300	4540	4690	4885	5070	5260	5440	5675 (G)	5795	6005 (H)				
	SINGLE	(lbs)	4500	4725	4940	5155	5370	5510	5780	5980	6175 (G)	6370	6610 (H)				
11R22.5	DUAL	(lbs)	4380	4580	4760	4950	5205	5415	5625	5840	5895 (G)	5950	6005 (H)	6390 (H)			
	SINGLE	(lbs)	4530	4770	4990	5220	5510	5730	5950	6175	6320 (G)	6465	6610 (H)	6940 (H)			
385/65R22.5	SINGLE	(lbs)	6380	6720	6940	7350	7650	8050	8230	8510	8820	9050	9370		9650	9920 (L)	
425/65R22.5	SINGLE	(lbs)	7590	7990	8270	8740	9100	9370	9790	10100	10500	10700	11400 (L)				
285/75R24.5	DUAL	(lbs)	4135	4340	4540	4740	4930	5205	5310	5495	5675 (G)	5860	6175 (H)				
	SINGLE	(lbs)	4545	4770	4940	5210	5450	5675	5835	6040	6175 (G)	6440	6780 (H)				
11R24.5	DUAL	(lbs)	4660	4870	5070	5260	5510	5675	5840	6005	6205 (G)	6405	6610 (H)				
	SINGLE	(lbs)	4820	5070	5310	5550	5840	6095	6350	6610	6790 (G)	6970	7160 (H)				

Tire load limits at various inflation pressures are based upon Tire and Rim Association (TRA) standards and tables, except where there is no specification established by the TRA. In these few cases, the tire design is based on the European Tire and Rim Technical Organization (ETRTO) whose standards govern these tires designs.

# RL280+

LONG HAUL | STEER



## FEATURES & BENEFITS

- Decoupling grooves help to resist uneven shoulder wear.
- S-groove design reduces bottom casing strain and promotes longer even wear.
- Micro-sipes on groove edges minimize free-rolling irregular wear.
- Fuel efficient and part of the EPA SmartWay® verified technologies of low rolling resistance tires in steer axle position.

### PERFORMANCE PROMISE<sup>1</sup>



72-MONTH



WORKMANSHIP & MATERIALS



CASING ALLOWANCE & RETREADS

<sup>1</sup> See complete Limited Protection Policy on pages 88-94 for details and exclusions.

ITEM#	SIZE	LOAD/SPEED	PLY RATING	MIN. RIM WIDTH (IN)	MAX. RIM WIDTH (IN)	TREAD DEPTH (32NDS)	WEIGHT (LBS)	OVERALL DIAMETER (IN)	SECTION WIDTH (IN)	SINGLE MAX LOAD @ PRESSURE	DUAL MAX LOAD @ PRESSURE	RPM
96011	11R22.5/14	144/142M	G	7.50	8.25	18.0	115.90	41.26	11.00	6175@105	5840@105	505
96012	11R24.5/14	146/143M	G	7.50	8.25	18.0	129.60	43.31	11.00	6610@105	6005@105	480
96013	295/75R22.5/14	144/141M	G	8.25	9.00	18.0	111.30	39.76	11.61	6175@110	5675@110	520
96014	285/75R24.5/14	144/141M	G	7.50	8.25	18.0	122.00	41.30	11.22	6175@110	5675@110	500

# RD240

REGIONAL | DEEP TREAD | ALL-POSITION



## FEATURES & BENEFITS

- Tough tread compound and solid shoulder ribs resist wear inherent in high-scrub applications.
- Cross-rib siping enables a continuous, solid grip on wet roads.
- Micro-sipes on groove edges promote wet traction and even wear.
- Stone ejectors help to protect casing.

### PERFORMANCE PROMISE<sup>1</sup>



72-MONTH



WORKMANSHIP & MATERIALS



CASING ALLOWANCE & RETREADS

<sup>1</sup> See complete Limited Protection Policy on pages 88-94 for details and exclusions.

ITEM#	SIZE	LOAD/SPEED	PLY RATING	RIM WIDTH (IN)	MAX. RIM WIDTH (IN)	TREAD DEPTH (32NDS)	WEIGHT (LBS)	OVERALL DIAMETER (IN)	SECTION WIDTH (IN)	SINGLE MAX LOAD @ PRESSURE	DUAL MAX LOAD @ PRESSURE	RPM
96034	11R22.5/16	148/145L	H	7.50	8.25	22.0	125.00	41.50	11.00	6940@123	6390@123	500
96035	11R24.5/16	149/146L	H	7.50	8.25	22.0	138.00	43.50	11.00	7160@120	6610@120	475

# RA200

REGIONAL | ALL-POSITION

## FEATURES & BENEFITS

- Closed and wide shoulder design promotes even wear and lateral stability.
- Multi-point edged groove design promotes better wet and dry traction.
- Zig-zag groove design provides outstanding handling for all-position applications.
- Micro-sipes on groove edges promote wet traction and optimize free-rolling wear.



### PERFORMANCE PROMISE<sup>1</sup>



72-MONTH



WORKMANSHIP & MATERIALS



CASING ALLOWANCE & RETREADS

<sup>1</sup> See complete Limited Protection Policy on pages 88-94 for details and exclusions.

ITEM#	SIZE	LOAD/SPEED	PLY RATING	RIM WIDTH (IN)	MAX. RIM WIDTH (IN)	TREAD DEPTH (32NDS)	WEIGHT (LBS)	OVERALL DIAMETER (IN)	SECTION WIDTH (IN)	SINGLE MAX LOAD @ PRESSURE	DUAL MAX LOAD @ PRESSURE	RPM
96042	10R17.5/18	143/141L	J	6.75	7.50	16.0	79.00	33.68	10.00	6005@123	5675@123	615
96036	11R22.5/14	144/142M	G	7.50	8.25	19.0	115.00	41.31	11.00	6175@105	5840@105	500
96037	11R22.5/16	148/145M	H	7.50	8.25	19.0	118.00	41.31	11.00	6940@123	6390@123	500
96038	11R24.5/14	146/143L	G	7.50	8.25	19.0	129.00	43.31	11.00	6610@105	6005@105	480
96039	11R24.5/16	149/146L	H	7.50	8.25	19.0	132.00	43.31	11.00	7160@120	6610@120	480
96043	215/75R17.5/16	135/133K	H	6.00	6.75	16.0	61.00	30.15	8.46	4805@123	4540@123	690
96046	225/70R19.5/14	128/126M	G	6.00	6.75	16.0	70.00	31.83	8.86	3970@110	3750@110	650
96044	235/75R17.5/18	143/141K	J	6.75	7.50	16.0	68.00	31.31	9.25	6005@127	5675@127	660
96047	245/70R19.5/16	136/134K	H	6.75	7.50	16.0	81.00	32.89	9.65	4940@120	4675@120	630
96049	255/70R22.5/16	140/137N	H	7.50	8.25	16.0	87.00	36.51	10.04	5510@120	5070@120	565
96048	265/70R19.5/18	143/141K	J	7.50	8.25	16.0	89.00	33.91	10.43	6005@123	5675@123	610
96050	275/70R22.5/16	148/145M	H	8.25	9.00	18.0	104.00	37.62	10.83	6940@130	6390@130	550
960411	285/75R24.5/14	144/141M	G	7.50	8.25	19.0	124.00	41.35	11.22	6175@110	5675@110	500
96040	295/75R22.5/14	144/141M	G	8.25	9.00	19.0	118.00	39.81	11.61	6175@110	5675@110	520
96045	8R19.5/12	124/122M	F	5.25	6.75	16.0	68.00	33.68	8.00	3525@110	3305@110	615

# DL380

CLOSED SHOULDER | DRIVE

## FEATURES & BENEFITS

- Closed and wide shoulder design promotes even wear and lateral stability.
- Variable angle grooves minimize torque and stress cracking.
- 3D sipes lock together under compression to create the stability of a solid block.
- Aggressive center lugs help to improve traction in wet or dry conditions for the life of the tread.



### PERFORMANCE PROMISE<sup>1</sup>



72-MONTH



WORKMANSHIP & MATERIALS



CASING ALLOWANCE & RETREADS

<sup>1</sup> See complete Limited Protection Policy on pages 88-94 for details and exclusions.

ITEM#	SIZE	LOAD/SPEED	PLY RATING	RIM WIDTH (IN)	MAX. RIM WIDTH (IN)	TREAD DEPTH (32NDS)	WEIGHT (LBS)	OVERALL DIAMETER (IN)	SECTION WIDTH (IN)	SINGLE MAX LOAD @ PRESSURE	DUAL MAX LOAD @ PRESSURE	RPM
960571	11R22.5/14	144/142L	G	7.50	8.25	30.0	127.00	41.99	10.83	6175@105	5840@105	495
96058	11R22.5/16	148/145L	H	7.50	8.25	30.0	130.00	41.99	10.83	6940@123	6390@123	495
96059	11R24.5/14	146/143L	G	7.50	8.25	30.0	139.00	43.99	10.83	6610@105	6005@105	470
96060	11R24.5/16	149/146L	H	7.50	8.25	30.0	141.00	43.99	10.83	7160@120	6610@120	470
96061	285/75R24.5/14	144/141L	G	7.50	8.25	30.0	131.00	42.03	11.22	6175@110	5675@110	495
96062	295/75R22.5/14	144/141L	G	8.25	9.00	30.0	129.00	40.50	11.61	6175@110	5675@110	510



# DT320

MIXED SERVICE | OPEN SHOULDER | DRIVE

## FEATURES & BENEFITS

- Durable open shoulder design helps to deliver long tread life and traction.
- Zig-zag lateral siping provides excellent wet grip and enhances even wear.
- Aggressive center lugs help to improve traction in wet or dry conditions for the life of the tread.
- Cut and chip compound significantly increases tread life.



### PERFORMANCE PROMISE<sup>1</sup>



72-MONTH



WORKMANSHIP & MATERIALS



CASING ALLOWANCE & RETREADS

<sup>1</sup> See complete Limited Protection Policy on pages 88-94 for details and exclusions.

ITEM#	SIZE	LOAD/SPEED	PLY RATING	MIN. RIM WIDTH (IN)	MAX. RIM WIDTH (IN)	TREAD DEPTH (32NDS)	WEIGHT (LBS)	OVERALL DIAMETER (IN)	SECTION WIDTH (IN)	SINGLE MAX LOAD @ PRESSURE	DUAL MAX LOAD @ PRESSURE	RPM
97863	225/70R19.5/14	128/126M	G	6.00	6.75	19.0	68.00	32.01	8.86	3970@110	3750@110	650
96063	255/70R22.5/16	140/137L	H	7.50	8.25	22.0	96.00	36.89	10.04	5510@120	5070@120	565

# MA400

MIXED SERVICE | ON/OFF ROAD | ALL-POSITION

## FEATURES & BENEFITS

- Cut and chip tread compound and solid shoulder ribs resist wear inherent in high-scrub applications.
- Minimized tread void and cut and chip compound significantly increase tread life.
- Stone ejectors help to protect casing.
- Tread design incorporates lateral grooves to improve traction in wet or dry conditions.



### PERFORMANCE PROMISE<sup>1</sup>



72-MONTH



WORKMANSHIP & MATERIALS



CASING ALLOWANCE & RETREADS

<sup>1</sup> See complete Limited Protection Policy on pages 88-94 for details and exclusions.

ITEM#	SIZE	LOAD/SPEED	PLY RATING	RIM WIDTH (IN)	MAX. RIM WIDTH (IN)	TREAD DEPTH (32NDS)	WEIGHT (LBS)	OVERALL DIAMETER (IN)	SECTION WIDTH (IN)	SINGLE MAX LOAD @ PRESSURE	DUAL MAX LOAD @ PRESSURE	RPM
97864	1124.5/16	149/146L	16/H	7.50	8.25	22.0	140.00	43.50	11.00	7160@120	6610@120	475
96064	255/70R22.5/16	140/137M	16/H	7.50	8.25	18.0	82.00	36.64	10.04	5510@120	5070@120	565
97865	275/70R22.5/16	148/145L	16/H	6.50	9.00	22.0	110.00	37.87	10.83	6940@130	3690@130	548

# DT340

REGIONAL | OPEN SHOULDER | DRIVE

## FEATURES & BENEFITS

- Open shoulder design helps to deliver long tread life and traction.
- Tread design incorporates bridges between lugs to enhance stability.
- Aggressive center lugs help to improve traction in wet and dry conditions for the life of the tread.
- Zig-zag lateral siping provides excellent wet grip and enhances even wear.



### PERFORMANCE PROMISE<sup>1</sup>



72-MONTH



WORKMANSHIP & MATERIALS



CASING ALLOWANCE & RETREADS

<sup>1</sup> See complete Limited Protection Policy on pages 88-94 for details and exclusions.

ITEM#	SIZE	LOAD/SPEED	PLY RATING	RIM WIDTH (IN)	MAX. RIM WIDTH (IN)	TREAD DEPTH (32NDS)	WEIGHT (LBS)	OVERALL DIAMETER (IN)	SECTION WIDTH (IN)	SINGLE MAX LOAD @ PRESSURE	DUAL MAX LOAD @ PRESSURE	RPM
96053	10R22.5/14	141/139K	G	6.75	7.50	22.0	112.00	40.24	10.00	5675@115	5355@115	515
96054	11R22.5/16	148/145M	H	7.50	8.25	26.0	128.00	41.73	11.00	6940@123	6390@123	500
96055	11R24.5/16	149/146L	H	7.50	8.25	26.0	140.00	43.73	11.00	7160@120	6610@120	475
960511	225/70R19.5/14	128/126L	G	6.00	6.75	19.0	68.00	32.01	8.86	3970@110	3750@110	650
96052.1	245/70R19.5/16	136/134J	H	6.75	7.50	19.0	84.00	33.07	9.65	4940@120	4675@120	630
96056	295/75R22.5/14	144/141L	G	8.25	9.00	26.0	129.00	40.24	11.61	6175@110	5675@110	515

# MA440

MIXED SERVICE | WIDE BASE | ALL-POSITION

## FEATURES & BENEFITS

- Zig-zag groove design provides outstanding handling.
- Tread pattern design helps to improve traction in wet and dry conditions for the life of the tread.
- Minimized tread void and cut and chip compound significantly increase tread life.
- Cut and chip tread compound and solid shoulder ribs resist wear inherent in high-scrub application.



### PERFORMANCE PROMISE<sup>1</sup>



72-MONTH



WORKMANSHIP & MATERIALS



CASING ALLOWANCE & RETREADS

<sup>1</sup> See complete Limited Protection Policy on pages 88-94 for details and exclusions.

ITEM#	SIZE	LOAD/SPEED	PLY RATING	RIM WIDTH (IN)	MAX. RIM WIDTH (IN)	TREAD DEPTH (32NDS)	WEIGHT (LBS)	OVERALL DIAMETER (IN)	SECTION WIDTH (IN)	SINGLE MAX LOAD @ PRESSURE	DUAL MAX LOAD @ PRESSURE	RPM
96019	385/65R22.5/20	160J	20/L	11.75	12.25	21.0	169.40	42.20	15.16	9920@130	—	490
97866	425/65R22.5/20	165K	20/L	6.50	13.00	22.0	207.00	44.09	16.73	11400@120	—	471

# RF110+

LONG HAUL | TRAILER



## FEATURES & BENEFITS

- Decoupling grooves help to resist uneven shoulder wear.
- Cross-rib siping improves traction by enabling a solid grip on wet roads.
- Micro-sipes on groove edges promote even wear.
- Fuel efficient and part of the EPA SmartWay® verified technologies of low rolling resistance tires in steer axle position.

## PERFORMANCE PROMISE<sup>1</sup>



**72-MONTH**



**WORKMANSHIP & MATERIALS**



**CASING ALLOWANCE & RETREADS**

<sup>1</sup> See complete Limited Protection Policy on pages 88-94 for details and exclusions.

ITEM#	SIZE	LOAD/SPEED	PLY RATING	MIN. RIM WIDTH (IN)	MAX. RIM WIDTH (IN)	TREAD DEPTH (32NDS)	WEIGHT (LBS)	OVERALL DIAMETER (IN)	SECTION WIDTH (IN)	SINGLE MAX LOAD @ PRESSURE	DUAL MAX LOAD @ PRESSURE	RPM
96015	11R22.5/14	144/142M	G	7.50	8.25	12.0	107.20	40.87	11.00	6175@105	5840@105	505
96016	11R24.5/14	146/143M	G	7.50	8.25	12.0	119.20	42.94	11.00	6610@105	6005@105	480
96017.1	295/75R22.5/14	144/141M	G	8.25	8.25	12.0	103.00	39.41	11.61	6175@110	5675@110	525
96018	285/75R24.5/14	144/141M	G	7.50	9.00	12.0	107.00	40.91	11.22	6175@110	5675@110	505

## NOTES



# SIZE LOAD SPEED GUIDES

## TIRE SIZING

### LOAD INDEX TABLE

LI	KG	LBS	LI	KG	LBS	LI	KG	LBS	LI	KG	LBS
0	45.0	99.2	40	140	308.6	80	450	992.1	120	1400	3086.4
1	46.2	101.9	41	145	319.7	81	462	1018.5	121	1450	3196.6
2	47.5	104.7	42	150	330.7	82	475	1047.2	122	1500	3306.9
3	48.7	107.4	43	155	341.7	83	487	1073.6	123	1550	3417.1
4	50.0	110.2	44	160	352.7	84	500	1102.3	124	1600	3527.3
5	51.5	113.5	45	165	363.8	85	515	1135.4	125	1650	3637.6
6	53.0	116.8	46	170	374.8	86	530	1168.4	126	1700	3747.8
7	54.5	120.1	47	175	385.8	87	545	1201.5	127	1750	3858.0
8	56.0	123.5	48	180	396.8	88	560	1234.6	128	1800	3968.3
9	58.0	127.9	49	185	407.8	89	580	1278.7	129	1850	4078.5
10	60.0	132.3	50	190	418.9	90	600	1322.8	130	1900	4188.7
11	61.5	135.6	51	195	429.9	91	615	1355.8	131	1950	4298.9
12	63.0	138.9	52	200	440.9	92	630	1388.9	132	2000	4409.2
13	65.0	143.3	53	206	454.1	93	650	1433.0	133	2060	4541.4
14	67.0	147.7	54	212	467.4	94	670	1477.1	134	2120	4673.7
15	69.0	152.1	55	218	480.6	95	690	1521.2	135	2180	4806.0
16	71.0	156.5	56	224	493.8	96	710	1565.3	136	2240	4938.3
17	73.0	160.9	57	230	507.1	97	730	1609.3	137	2300	5070.5
18	75.0	165.3	58	236	520.3	98	750	1653.4	138	2360	5202.8
19	77.5	170.9	59	243	535.7	99	775	1708.6	139	2430	5357.1
20	80.0	176.4	60	250	551.1	100	800	1763.7	140	2500	5511.5
21	82.5	181.9	61	257	566.6	101	825	1818.8	141	2575	5676.8
22	85.0	187.4	62	265	584.2	102	850	1873.9	142	2650	5842.2
23	87.5	192.9	63	272	599.6	103	875	1929.0	143	2725	6007.5
24	90.0	198.4	64	280	617.3	104	900	1984.1	144	2800	6172.8
25	92.5	203.9	65	290	639.3	105	925	2039.2	145	2900	6393.3
26	95.0	209.4	66	300	661.4	106	950	2094.4	146	3000	6613.8
27	97.5	214.9	67	307	676.8	107	975	2149.5	147	3075	6779.1
28	100.0	220.5	68	315	694.4	108	1000	2204.6	148	3150	6944.4
29	103.0	227.1	69	325	716.5	109	1030	2270.7	149	3250	7164.9
30	106.0	233.7	70	335	738.5	110	1060	2336.9	150	3350	7385.4
31	109.0	240.3	71	345	760.6	111	1090	2403.0	151	3450	7605.8
32	112.0	246.9	72	355	782.6	112	1120	2469.1	152	3550	7826.3
33	115.0	253.5	73	365	804.7	113	1150	2535.3	153	3650	8046.7
34	118.0	260.1	74	375	826.7	114	1180	2601.4	154	3750	8267.2
35	121.0	266.8	75	387	853.2	115	1215	2678.6	155	3875	8542.8
36	125.0	275.6	76	400	881.8	116	1250	2755.7	156	4000	8818.3
37	128.0	282.2	77	412	908.3	117	1285	2832.9	157	4125	9093.9
38	132.0	291.0	78	425	936.9	118	1320	2910.1	158	4250	9369.5
39	136.0	299.8	79	437	963.4	119	1360	2998.2	159	4375	9645.1

### LOAD INDEX TABLE (CONT.)

LI	KG	LBS	LI	KG	LBS	LI	KG	LBS	LI	KG	LBS
160	4500.0	9920.6	190	10600	23368.6	220	25000	55114.6	250	60000	132275.1
161	4625.0	10196.2	191	10900	24030.0	221	25750	56768.1	251	61500	135582.0
162	4750.0	10471.8	192	11200	24691.4	222	26500	58421.5	252	63000	138888.9
163	4875.0	10747.4	193	11500	25352.7	223	27250	60075.0	253	65000	143298.1
164	5000.0	11022.9	194	11800	26014.1	224	28000	61728.4	254	67000	147707.2
165	5150.0	11353.6	195	12150	26785.7	225	29000	63933.0	255	69000	152116.4
166	5300.0	11684.3	196	12500	27557.3	226	30000	66137.6	256	71000	156525.6
167	5450.0	12015.0	197	12850	28328.9	227	30750	67791.0	257	73000	160934.7
168	5600.0	12345.7	198	13200	29100.5	228	31500	69444.4	258	75000	165343.9
169	5800.0	12786.6	199	13600	29982.4	229	32500	71649.0	259	77500	170855.4
170	6000.0	13227.5	200	14000	30864.2	230	34500	73853.6	260	80000	176366.8
171	6150.0	13558.2	201	14500	31966.5	231	34500	76058.2	261	82500	181878.3
172	6300.0	13888.9	202	15000	33068.8	232	35500	78262.8	262	85000	187389.8
173	6500.0	14329.8	203	15500	34171.1	233	36500	80467.4	263	87500	192901.2
174	6700.0	14770.7	204	16000	35273.4	234	37500	82672.0	264	90000	198412.7
175	6900.0	15211.6	205	16500	36375.7	235	38750	85427.7	265	92500	203924.2
176	7100.0	15652.6	206	17000	37478.0	236	40000	88183.4	266	95000	209435.6
177	7300.0	16093.5	207	17500	38580.2	237	41250	90939.2	267	97500	215947.1
178	7500.0	16534.4	208	18000	39682.5	238	42500	93694.9	268	100000	220458.6
179	7750.0	17085.5	209	18500	40784.8	239	43750	96450.6	269	103000	227072.3
180	8000.0	17636.7	210	19000	41887.1	240	45000	99206.3	270	106000	233686.1
181	8250.0	18187.8	211	19500	42989.4	241	46250	101962.1	271	109000	240299.8
182	8500.0	18739.0	212	20000	44091.7	242	47500	104717.8	272	112000	246913.6
183	8750.0	19290.1	213	20600	45414.5	243	48750	107473.5	273	115000	253527.3
184	9000.0	19841.3	214	21200	46737.2	244	50000	110229.3	274	118000	260141.1
185	9250.0	20392.4	215	21800	48060.0	245	51500	113536.2	275	121000	266754.9
186	9500.0	20943.6	216	22400	49382.7	246	53000	116843.0	276	125000	275573.2
187	9750.0	21494.7	217	23000	50705.5	247	54500	120149.9	277	128500	283289.2
188	10000.0	22045.9	218	23600	52028.2	248	56000	123456.8	278	132000	291005.3
189	10300.0	22707.2	219	24300	53571.4	249	58000	127866.0	279	136000	299823.6

# SIZE LOAD SPEED GUIDES CONT.

## TIRE SIZING

Before you can determine the replacement tire that best fits your lifestyle, you must first find the tire that properly fits your vehicle. Identifying the proper replacement tire size is more than merely measuring the radius. It considers factors such as aspect ratio, load index, speed rating, metric type and more.

### SPEED RATING SYMBOLS

SPEED SYMBOL	MAXIMUM SPEED (KM/H)	MAXIMUM SPEED (MPH)
A1	5	3
A2	10	6
A3	15	9
A4	20	12
A5	25	16
A6	30	19
A7	35	22
A8	40	25
B	50	31
C	60	37
D	65	40
E	70	43
F	80	50
G	90	56
J	100	62
K	110	68
L	120	75
M	130	81
N	140	87
P	150	94
Q	160	100
R	170	106
S	180	112
T	190	118
U	200	124
H	210	130
V	240	149
W	270	169
Y	300	186
ZR	OVER 240	OVER 149

# CASING ALLOWANCE

# OF TREADS COVERED	HERCULES STRONG GUARD			HERCULES H-SERIES		DYNATRAC		IRONMAN	
	3			2		2		1 - 2	
CASING VALUES	FIRST	SECOND	THIRD	FIRST	SECOND	FIRST	SECOND	FIRST	SECOND
8.25R15.5								\$20	—
10.00R15								\$20	—
10R17.5						\$30	\$15	\$30	—
215/75R17.5	\$30	\$15	\$10	\$30	\$15	\$30	\$15	\$30	\$15
235/75R17.5	\$30	\$15	\$10	\$30	\$15	\$30	\$15	\$30	\$15
245/70R17.5				\$30	\$15			\$30	\$15
8R19.5						\$30	\$15	\$30	—
225/70R19.5	\$30	\$15	\$10	\$30	\$15	\$30	\$15	\$30	\$15
245/70R19.5	\$30	\$15	\$10	\$30	\$15	\$30	\$15	\$30	\$15
265/70R19.5				\$30	\$15	\$30	\$15	\$30	\$15
10.00R20								\$50	—
9R22.5								\$50	—
10R22.5	\$65	\$30	\$20			\$50	\$25	\$50	—
11R22.5	\$90	\$50	\$30	\$90	\$50	\$90	\$50	\$90	\$50
12R22.5	\$90	\$50	\$30					\$90	—
295/80R22.5	\$90	\$50	\$30					\$90	—
315/80R22.5	\$90	\$50	\$30	\$90	\$50			\$90	—
295/75R22.5	\$90	\$50	\$30	\$90	\$50	\$90	\$50	\$90	\$50
255/70R22.5	\$65	\$30	\$20	\$65	\$30	\$65	\$30	\$65	\$30
275/70R22.5	\$65	\$30	\$20	\$65	\$30	\$65	\$30	\$65	—
385/65R22.5	\$100	\$50	\$30			\$100	\$50	\$100	—
425/65R22.5	\$100	\$50	\$30			\$100	\$50	\$100	—
445/65R22.5	\$100	\$50	\$30					\$100	—
11R24.5	\$90	\$50	\$30	\$90	\$50	\$90	\$50	\$90	\$50
12R24.5								\$90	—
285/75R24.5	\$90	\$50	\$30	\$90	\$50	\$90	\$50	\$90	\$50



## BUFFING GUIDELINES: HERCULES

TIRE SIZE	TREAD DESIGN	BUFF RADIUS		MAXIMUM BUFF WIDTH		TIRE SIZE	TREAD DESIGN	BUFF RADIUS		MAXIMUM BUFF WIDTH	
		IN	MM	IN	MM			IN	MM	IN	MM
10R22.5	Strong Guard H-DO	25	631	8.23	209	285/75R24.5	H-309	17	425	8.94	227
11R22.5	H-309	33	845	8.82	224	285/75R24.5	Strong Guard H-DO	31	779	9.61	244
11R22.5	H-933	34	868	9.02	234	285/75R24.5	Strong Guard H-DC	31	776	9.61	244
11R22.5	Strong Guard H-DO	37	929	9.53	242	285/75R24.5	Strong Guard HTL	23.6	600	8.9	225
11R22.5	Strong Guard H-DC	37	936	9.53	242	285/75R24.5	Strong Guard H-RD	23.6	600	8.9	225
11R22.5	Strong Guard HTL	24.3	616	8.70	222	285/75R24.5	Strong Guard H-LS	21	535	9.06	230
11R22.5	Strong Guard H-MA	52	1330	8.82	224	295/75R22.5	H-309	20	515	8.82	224
11R22.5	Strong Guard H-RA	24.3	616	8.70	220	295/75R22.5	Strong Guard H-DO	27	679	9.61	244
11R22.5	Strong Guard H-RD	30.7	781	8.80	223	295/75R22.5	Strong Guard H-DC	27	676	9.61	244
11R22.5	Strong Guard H-LS	34	860	8.98	228	295/75R22.5	Strong Guard HTL	30.9	785	9.2	233
11R22.5	Strong Guard H-MX	35	893	9.33	237	295/75R22.5	Strong Guard H-RD	26.8	681	9.3	236
11R22.5-16	Strong Guard H-MD	770	30.3	242	9.5	295/75R22.5	Strong Guard H-RA	25.4	645	9.1	230
11R24.5	H-309	33	845	8.82	224	295/75R22.5	Strong Guard H-LS	28	708	8.98	228
11R24.5	H-933	34	868	9.02	234	295/80R22.5	Strong Guard H-RA	29.5	750	9.1	230
11R24.5	Strong Guard H-DO	38	956	9.53	242	315/80R22.5	Strong Guard H-RD	49.3	1252	9.4	238
11R24.5	Strong Guard H-DC	37	936	9.53	242	315/80R22.5	Strong Guard H-MA	33	850	10.04	255
11R24.5	Strong Guard HTL	24.3	616	8.70	222	385/65R22.5	Strong Guard H-MW	35.4	900	13.0	330
11R24.5	Strong Guard H-MA	52	1330	8.82	224	425/65R22.5	Strong Guard H-MW	45.3	1150	14.2	360
11R24.5	Strong Guard H-RD	30.7	781	8.80	223	445/65R22.5	Strong Guard H-MW	46.5	1180	15.4	390
11R24.5	Strong Guard H-LS	34	860	8.98	228						
11R24.5	Strong Guard H-MX	35	893	9.33	237						
11R24.5-16	Strong Guard H-MD	770	30.3	242	9.5						
12R22.5-18	Strong Guard H-MD	874.6	34.4	234	9.2						
215/75R17.5	Strong Guard H-RA	20.7	525	6.30	160						
225/70R19.5	H-933	17	443	7.89	201						
225/70R19.5	Strong Guard H-DO	17	443	7.89	200.5						
225/70R19.5	Strong Guard H-DC	17	443	7.89	200.5						
225/70R19.5	Strong Guard H-RA	17.7	450	8.40	213						
235/75R17.5	Strong Guard H-RA	23.6	600	7.30	186						
245/70R19.5	Strong Guard H-DO	13	331	8.58	218						
245/70R19.5	Strong Guard H-DC	13	331	8.58	218						
245/70R19.5	Strong Guard H-RA	22.2	565	8.50	215						
245/75R22.5	Strong Guard H-RA	511.5	20.1	195	7.7						
255/70R22.5	Strong Guard H-RA	24.3	617	8.40	213						
275/70R22.5	Strong Guard H-RA	27.9	708	9.00	229						
275/70R22.5	Strong Guard H-MA	25	632	9.33	237						

## BUFFING GUIDELINES: IRONMAN

TIRE SIZE	TREAD DESIGN	BUFF RADIUS		MAXIMUM BUFF WIDTH		TIRE SIZE	TREAD DESIGN	BUFF RADIUS		MAXIMUM BUFF WIDTH	
		IN	MM	IN	MM			IN	MM	IN	MM
8.25R15	I-190	24.4	620	7.5	190	225/70R22.5	I-181	23.6	600	8.5	215
10.00R15	I-191	31.9	810	8.4	213	235/75R17.5	I-109	23.1	587	7.6	194
10.00R20	I-181	19.9	506	8.7	220	245/70R19.5	I-109	16.7	425	8.0	202
9R22.5	I-192	22.8	580	7.2	184	245/70R19.5	I-604	19.1	485	8.0	204
10R22.5	I-192	26.4	670	7.9	201	255/70R22.5	I-181	24.3	617	8.4	213
11R22.5	I-109 EcoFT	17.7	450	8.7	220	275/70R22.5	I-502 EcoFT	23.6	600	9.0	228
11R22.5	I-208 EcoFT	18.5	470	8.7	220	285/75R24.5	I-109 EcoFT	23.6	600	8.9	225
11R22.5	I-301	17.7	450	8.7	220	285/75R24.5	I-208 ECOFT	23.6	600	8.9	225
11R22.5	I-370 EcoFT	18.5	470	8.7	220	285/75R24.5	I-370 EcoFT	23.6	600	8.9	225
11R22.5	I-460 EcoFT	19.7	500	8.7	220	285/75R24.5	I-480	23.6	600	8.9	225
11R22.5	I-480	19.7	500	8.7	220	285/75R24.5	I-502 EcoFt	23.6	600	8.9	225
11R22.5	I-502 EcoFT	21.7	550	8.7	220	285/75R24.5	I-601 EcoFT	23.6	600	8.9	225
11R22.5	I-601 EcoFT	17.7	450	8.7	220	295/75R22.5	I-109 EcoFT	24.6	625	9.4	240
11R24.5	I-109 EcoFT	17.7	450	8.7	220	295/75R22.5	I-208 EcoFT	24.6	625	9.4	240
11R24.5	I-208 EcoFT	18.5	470	8.7	220	295/75R22.5	I-460 EcoFT	29.5	750	9.4	240
11R24.5	I-301	17.7	450	8.7	220	295/75R22.5	I-480	20.9	530	9.1	230
11R24.5	I-370 EcoFT	18.5	470	8.7	220	295/75R22.5	I-502 EcoFT	27.6	700	9.4	240
11R24.5	I-502 EcoFT	21.7	550	8.7	220	295/75R22.5	I-601 EcoFT	24.6	625	9.4	240
11R24.5	I-601 EcoFT	17.7	450	8.7	220	295/75R22.5	I-370 EcoFT	29.5	750	9.4	240
11R24.5	I-480	19.7	500	8.7	220	315/80R22.5	I-301	25.6	650	10.2	260
12R22.5	I-181	49.3	1252	9.3	236	315/80R22.5	I-402	37.4	950	9.8	250
12.00R24	I-301	31.8	809	9.2	234	315/80R22.5	I-502 EcoFT	37.4	950	9.8	250
12R24.5	I-301	49.3	1251	9.3	236	385/65R22.5	I-402	39.4	1000	12.6	320
215/75R17.5	I-109	19.5	496	6.7	170	425/65R22.5	I-402	43.3	1100	13.6	345
225/70R19.5	I-109	20.0	507	6.9	176	445/65R22.5	I-402	46.5	1180	14.8	375
225/70R19.5	I-604	15.4	390	7.1	180						

# BUFFING GUIDELINES: DYNATRAC

TIRE SIZE	TREAD DESIGN	BUFF RADIUS		MAXIMUM BUFF WIDTH		TIRE SIZE	TREAD DESIGN	BUFF RADIUS		MAXIMUM BUFF WIDTH	
		IN	MM	IN	MM			IN	MM	IN	MM
235/75R17.5	RA200	26.3	670	7.4	190	8R19.5	RA200	19.6	500	6.1	156
245/70R19.5	DT340	24.8	630	7.8	200	10R17.5	RA200	29.9	760	8.1	206
245/70R19.5	RA200	24.4	620	7.9	202	10R22.5	DT340	30.7	780	8.0	203
225/70R19.5	DT320	23.6	600	7.1	182	11R22.5	RL280+	29.1	740	8.6	220
255/70R22.5	DT320	24.8	630	7.8	200	11R22.5	RF110+	35.4	900	8.9	218
255/70R22.5	MA400	31.8	810	7.9	202	11R22.5	DL380	35.8	910	8.8	224
255/70R22.5	RA200	31.8	810	8.1	206	11R22.5	DT340	30.7	780	8.4	213
265/70R19.5	RA200	31.8	810	8.2	210	11R22.5	RA200	28.7	730	8.5	216
275/70R22.5	RA200	33.4	850	8.6	220	11R22.5	RD240	30.7	780	8.4	215
285/75R24.5	RL280+	35.2	895	9.0	229	11R24.5	RL280+	29.1	740	8.7	220
285/75R24.5	RF110+	31.4	800	8.6	220	11R24.5	RF110+	31.1	790	8.3	213
285/75R24.5	DL380	36.2	920	9.1	232	11R24.5	DL380	35.8	910	8.8	224
285/75R24.5	RA200	35.8	910	8.8	224	11R24.5	DT340	30.7	780	8.3	213
295/75R22.5	RL280+	36.6	930	9.3	237	11R24.5	RA200	28.7	730	8.5	216
295/75R22.5	RF110+	35.4	900	9.0	229	11R24.5	RD240	30.7	780	8.4	215
295/75R22.5	DL380	37.7	960	9.4	240	11R24.5	MA400	29.5	750	8.4	214
295/75R22.5	DT340	39.3	1000	9.2	235	215/75R17.5	RA200	22.8	580	6.9	176
385/65R22.5	MA440	33.4	850	12.20	306	225/70R19.5	DT340	24.0	610	7.0	180
295/75R22.5	RA200	37.7	960	9.0	231	225/70R19.5	RA200	25.5	650	7.0	180
						425/65R22.5	MA440	45.2	1150	13.0	332

# NOTES

---

---

---

---

---

---

---

---

---

---

---

---

---

---

---

---

---

---

---

---

---

---

---

---

---

---

---

---

---

---





## LIMITED PROTECTION POLICY AND PERFORMANCE PROMISE

Whatever you drive, and wherever you're going, you can trust Hercules tires to get you there safely and securely. For years, we have proudly provided our customers with the promise of superior protection, so they can always drive with confidence. And we put our promise in writing. It's simply an extension of the way we've always done business, putting our customers first and placing fairness and integrity above all. Because we understand what's riding on your tires. And we want you to know you can count on Hercules to keep it protected.

ICON	ICON DESCRIPTION
	<b>WORKMANSHIP &amp; MATERIALS</b> All-steel tires covered by this Limited Protection Policy that become unserviceable due to a defect in workmanship or material during the first 50% of the original usable tread life (original tread depth minus 2/32"), will be replaced with a comparable new tire without charge.
	<b>WORKMANSHIP &amp; MATERIALS</b> Tires covered by this Limited Protection Policy that become unserviceable due to a defect in workmanship or material during the first 2/32nds of an inch of usable treadwear or three (3) months from date of purchase, whichever comes first, will be replaced with a comparable new tire without charge.
	<b>CASING ALLOWANCE &amp; RETREADS</b> Most Hercules, Dynatrac and Ironman brand tires carry casing allowances for one to three retreads due to a defect in workmanship or material during the specified retreaded life or specified length of time from the date of manufacture, whichever comes first. The Casing Allowance and Retread is based upon individual Limited Protection Policies.
	<b>LIMITED PROTECTION POLICY</b> Hercules Tires Commercial carries a limited protection policy on most tires lasting a minimum of 36 months up to 84 months based upon the individual tire purchased or until the treadwear indicators become visible. Hercules will replace the tires free of charge due to a flaw in workmanship and materials within the specified requirements.
	<b>45 DAY TRUST OUR RIDE</b> If you are not completely satisfied with these tires, you may return them within 45 days to exchange them for a comparable set of Hercules brand tires.
	<b>60-MONTH</b> These tires have a Limited Protection Policy against defects in workmanship or material for 60 months from the date of purchase.
	<b>72-MONTH</b> These tires have a Limited Protection Policy against defects in workmanship or material for 72 months from the date of purchase.
	<b>84-MONTH</b> These tires have a Limited Protection Policy against defects in workmanship or material for 84 months from the date of purchase.

## LIMITED PROTECTION POLICY AND PERFORMANCE PROMISE CONT.

ICON	ICON DESCRIPTION
	<b>TRACTION STANDARD</b> The mountain snowflake symbol means that this tire meets certain requirements for providing traction in harsh conditions.
	<b>CASING ALLOWANCE &amp; RETREADS</b> Tires carry a casing allowance for 1 retread.
	<b>CASING ALLOWANCE &amp; RETREADS</b> Tires carry a casing allowance for 2 retreads.
	<b>CASING ALLOWANCE &amp; RETREADS</b> Tires carry a casing allowance for 3 retreads.
	<b>ROAD HAZARD</b> Covered by our industry-leading Road Hazard Protection Program, which provides free replacement for up to two years or the first 2/32nds of tread life. Strong Guard ST is covered for 1st 2/32nds free replacement.
	<b>36 MONTH FIELD AND STUBBLE HAZARD</b> -Prorated Tire Replacement- Hercules radial agricultural tires that become unserviceable due to Field Hazard or Stubble damage within (36) months from date of purchase will be replaced on a prorated basis. Hercules radial agricultural tires that become unserviceable due to Field Hazard or Stubble damage within (36) months from date of purchase will be replaced on a prorated basis.
	<b>EcoFT</b> EcoFT is an EPA Smartway verified technology.
	<b>SMARTWAY</b> Built with EPA Smartway verified technologies.

**MEDIUM TRUCK, ALL STEEL ST/LT, SPECIALTY TRAILER & COMMERCIAL LT LIMITED PROTECTION POLICY**

You are eligible for the benefits of this Limited Protection Policy if:

- You are the owner of new Hercules, Dynatrac or Ironman brand Medium Truck, all-steel ST/LT, Specialty Trailer or Commercial LT tires.
- Your tires bear Department of Transportation-prescribed tire identification numbers and are not "NA" (not adjustable) or "blem" (cosmetically blemished).
- Your Hercules, Dynatrac, or Ironman Medium Truck, All-Steel ST/LT, Specialty Trailer or Commercial LT tires have been used only on the vehicle on which they were originally installed according to the vehicle manufacturer's or tire manufacturer's recommendations

**WHAT IS COVERED, AND FOR HOW LONG?**

**HERCULES & DYNATRAC-MEDIUM TRUCK, ALL STEEL ST/LT & COMMERCIAL LT**

Free Tire Replacement-Tires covered by this Limited Protection Policy that become unserviceable due to a defect in workmanship or material during the first 50% of the original usable tread life (original tread depth minus 2/32"), will be replaced with a comparable new tire of the same brand without charge. You pay only for the mounting, balancing and full F.E.T. or T.S.F. 50% free replacement applies to tires purchased after January 1, 2014. (Without proof of purchase, date of manufacture will be used to determine age)

Prorated Tire Replacement-Tires worn beyond the first 50% of usable tread that become unserviceable due to a defect in workmanship or material will be replaced on a prorated basis. You are responsible for mounting, balancing and full F.E.T. or T.S.F.

**IRONMAN-MEDIUM TRUCK**

Free Tire Replacement-Ironman brand all-steel medium truck tires covered by this Limited Protection Policy that become unserviceable due to a defect in workmanship or material during the first 2/32nds of an inch of usable treadwear or three (3) months from date of purchase for I-Series, 1st 50% for I-Series Gen 2, whichever comes first, will be replaced with a comparable new Ironman tire without charge. You pay only for the mounting, balancing and full F.E.T. or T.S.F. (without proof of purchase, date of manufacture will be used to determine age).

Prorated Tire Replacement-Tires worn beyond the first 2/32nds of usable tread for I-Series, beyond 50% for I-Series Gen 2, or more than three (3) months from date of purchase, whichever comes first, that become unserviceable due to a defect in workmanship or material will be replaced on a prorated basis. You are responsible for mounting and balancing charges and full F.E.T or T.S.F.

**POLYESTER-STEEL & NYLON SPECIALTY TRAILER**

Free Tire Replacement-Specialty Trailer tires of polyester-steel or nylon construction which become unserviceable due to defects in workmanship and material will be replaced on a "no charge" basis during the first 2/32" of original usable tread.

The cost of mounting, balancing and any other service charges including applicable taxes are excluded from reimbursement.

Prorated Tire Replacement-Thereafter, the adjustment replacement price will be based upon tread wear prorated upon the basis of the original purchase price. Tires are considered 100% worn when the remaining tread depth is 2/32nds of an inch or less. Out of balance, out of round or ride disturbance adjustments for polyester-steel or nylon construction specialty tires will only be made during the first 2/32" of the original usable tread depth.

**STRONG GUARD ST ROAD HAZARD**

When an eligible tire is damaged during the first 2/32nds of an inch (1.6mm) of treadwear or first 24 months from date of purchase, whichever came first, the tire will be replaced with a comparable Hercules brand tire free of charge.

When the tire has 2/32nds of an inch or less in tread depth, it is considered worn out.

**HOW WILL PRORATED CHARGES BE CALCULATED?**

The replacement price will be calculated using the current selling price of the same brand tire purchased and multiplying by the percentage of original usable tread (that is remaining at the time of replacement).

**WHAT IS A COMPARABLE TIRE?**

A "comparable" new tire of the same brand may either be the same line of tire or, in the event that the tire is not available, a tire of the same basic construction and quality with a different sidewall or tread design.

If a higher-priced tire is accepted as replacement, the difference in price will be at an additional charge to you. Any replacement tire provided pursuant to this Limited Protection Policy will be covered by the new Limited Protection Policy in effect at the time of replacement.

**WHAT IS NOT COVERED BY THIS LIMITED PROTECTION POLICY?**

1. Tires branded or marked "NA" (not adjustable) or "blem" (cosmetically blemished), or that have been previously adjusted.
2. Irregular wear or tire damage due to:
  - a. Road Hazards including punctures, cuts, snags, impact breaks, etc. (excluding Terra Trac CH4).
  - b. Wreck, collision, fire, or vandalism.
  - c. Improper inflation, overloading, misapplication, misuse, negligence, high-speed tire spinning, chain damage, improper mounting or demounting.
  - d. Mechanical condition of the vehicle, including misalignment, wheel imbalance, or faulty shocks or brakes.
3. Ride disturbance after the first 2/32nds of treadwear or due to damaged wheels or any vehicle condition.
4. Ozone or weather cracking on tires over five (5) years from date of manufacture. (over (2) years, Terra Trac CH4).
5. Alteration of the tire or addition of alien material or transfer from one vehicle to another.

6. Loss of time or use inconvenience, or any incidental or consequential damages.
7. Failure due to improper or faulty tube.
8. Tires used for racing.

**WHEN DOES THE LIMITED PROTECTION POLICY END?**

**STRONG GUARD MT**

A tire has delivered its full original treadlife and the new tire coverage of this Limited Protection Policy ends when the treadwear indicators become visible, or 84 months from the date of original tire manufacture or new tire purchase date (without proof of purchase, date of manufacture will be used to determine age).

**H-SERIES TIRES**

A tire has delivered its full original treadlife and the new tire coverage of this Limited Protection Policy ends when the treadwear indicators become visible, or 72 months from the date of original tire manufacture or new tire purchase date (without proof of purchase, date of manufacture will be used to determine age).

**I-SERIES TIRES**

A tire has delivered its full original treadlife and the new tire coverage of this Limited Protection Policy ends when the treadwear indicators become visible, or 60-72 months from the date of original tire manufacture or new tire purchase date (without proof of purchase, date of manufacture will be used to determine age), whichever comes first.

**DYNATRAC TIRES**

A tire has delivered its full original treadlife and the new tire coverage of this Limited Protection Policy ends when the treadwear indicators become visible, or 72 months from the date of original tire manufacture or new tire purchase date (without proof of purchase, date of manufacture will be used to determine age).

**ALL-STEEL LT & ST TIRES**

A tire has delivered its full original treadlife and the new tire coverage of this Limited Protection Policy ends when the treadwear indicators become visible, or 72-80 months from the date of original tire manufacture or new tire purchase date (without proof of purchase, date of manufacture will be used to determine age).

**COMMERCIAL LT**

A tire has delivered its full original treadlife and the new tire coverage of this Limited Protection Policy ends when the treadwear indicators become visible, or 72 months from the date of original tire manufacture or new tire purchase date (without proof of purchase, date of manufacture will be used to determine age).

**POLYESTER-STEEL & NYLON SPECIALTY TRAILER**

**Strong Guard ST**

Eligible tires are covered by this Limited Protection Policy for a minimum of 60 months from the date of original tire

manufacture date or purchase date. (Without proof of purchase, date of manufacture will be used to determine age).

**HOW DO YOU OBTAIN AN ADJUSTMENT?**

In order to be eligible for the Hercules Limited Protection Policy service, the owner must:

- Present the tire to an authorized Hercules retailer, and
- Present proof of purchase (if applicable to faction of the retailer), and
- Complete and sign a Hercules Limited Protection Policy Claim Form, which is available at any authorized dealer, and
- Pay the amount due on a new tire, less the amount of credit, including taxes, mounting and balancing charges, or cost of other services ordered.

Contact your authorized Hercules Tires dealer for Limited Protection Policy information and procedure.

**DISCLAIMER**

This Limited Protection Policy or any protection policy stated or referred to herein, is exclusive and in lieu of any other guarantee regarding the quality of Hercules Tires, whether expressed or implied, and remedies for breach thereof shall be limited to those specifically provided herein. This Limited Protection Policy does not apply to polyester-steel (Hercules Power ST2) or nylon (Hercules Low-Pro H-D) construction specialty trailer tires. Casing Limited Protection Policy is valid only in North America.

**CASING LIMITED PROTECTION POLICY**

**WHAT IS COVERED AND FOR HOW LONG?**

Hercules brand medium radial truck tires are covered when the tire becomes unserviceable or non-retreadable due to a defect in workmanship or material. Hercules will provide a predetermined casing allowance.

The Casing Limited Protection Policy is valid during;

Hercules H-Series-the 2nd retreaded life or for 72 months from the date of manufacture, whichever comes first.

Strong Guard-the 3rd retreaded life or for 84 months from the date of manufacture, whichever comes first.

Dynatrac-the 2nd retreaded life or for 72 months from the date of manufacture, whichever comes first.

Ironman I-Series-the 1st retreaded life or for 60 months from the date of manufacture, whichever comes first.

**WHAT IS NOT COVERED BY THE CASING LIMITED PROTECTION POLICY?**

Tires used in mining and logging service are not covered under this warranty.

**CASING ALLOWANCES**

Please see Pg. 83 for casing allowances by brand and size.



**INDUSTRIAL + OTR**

All Hercules brand industrial tires are covered against defects due to materials and workmanship for up to three (3) or five (5) years from the stated serial number date. See Limited Protection Policy Section below for protection term for specific products.

If a product is deemed defective upon examination and analysis, Hercules Tire will provide an allowance against the original purchase price. The allowance will be determined by Hercules Tire, to be applied toward the purchase of a new product, based on the remaining unused portion of the tread or covered lifetime on the defective product.

The cost of transportation, service, and sales tax already paid will be borne by the owner of the product making the claim. This Limited Protection Policy will not apply if the Hercules product has been installed incorrectly, altered, repaired or misused in any matter whatsoever, which, in Hercules' sole opinion, has affected performance.

This Protection Policy is the only one applicable from Hercules Tire for industrial products. The company does not recognize any other condition, representation, approval or protection, whether explicit or implicit, or otherwise prescribed by law, other than mentioned above.

Hercules Tire cannot be held responsible for damages or claims caused by the tire whether such damages are direct or indirect, special, consequential or otherwise. Any liability is strictly limited to repair or reduction of an applicable purchase, according to the provisions in the Adjustments Sections below. This Limited Protection Policy is for the exclusive benefit of the owner and is not assignable.

**AGRICULTURAL TIRE LIMITED PROTECTION POLICY**

You are eligible for the benefits of this Limited Protection Policy if:

- You are the owner of new Hercules branded Agricultural tires.
- Your Hercules Agricultural tires have been used only on the vehicle on which they were originally installed according to the vehicle manufacturer's or tire manufacturer's recommendations.

**WHAT IS COVERED?**

Free Tire Replacement—Hercules brand radial and bias agricultural tires covered by this Limited Protection Policy that become unserviceable due to a defect in workmanship or material during the first 10% of usable treadwear or twelve (12) months from date of purchase, whichever comes first, will be replaced with a comparable new Hercules radial or bias agricultural tire without charge. You pay for the cost of mounting, appropriate taxes, or other service charges. (without proof of purchase, date of manufacture will be used to determine age).

Prorated Tire Replacement—Tires worn beyond the first 10% of usable tread, or more than twelve (12) months from date of purchase, whichever comes first, that become unserviceable due to a defect in workmanship or material will be replaced

on a prorated basis. The replacement price will be prorated based on years of service from the original date of purchase (without proof of purchase, date of manufacture will be used to determine age), as set forth on the following table. You pay for the cost of mounting, appropriate taxes, or other service charges. (without proof of purchase, date of manufacture will be used to determine age).

**HOW WILL THE ADJUSTMENT ALLOWANCE BE CALCULATED?**

Tire Age	Tread Depth Used	Adjustment Allowance
12 months or less	no more than 10%	100%
24 months or less	no more than 20%	75%
36 months or less	no more than 40%	60%
48 months or less	no more than 60%	35%
60 MONTHS OR LESS	no more than 80%	20%

The Adjustment Allowance will be multiplied by the original purchase price of the tire (excluding all taxes) to determine the amount of credit to be applied.

**WHAT IS A COMPARABLE TIRE?**

A "comparable" new tire of the same brand may either be the same line of tire or, in the event the tire is not available, a tire of the same basic construction and quality with a different sidewall or tread design. If a higher-priced tire is accepted as replacement, the difference in price will be at an additional charge to you. Any replacement tire provided pursuant to this Limited Protection Policy will be covered by the new Limited Protection Policy in effect at the time of replacement.

**WHAT IS NOT COVERED BY THIS LIMITED PROTECTION POLICY?**

1. Tires branded or marked "NA" (not adjustable) or "blem" (cosmetically blemished), or that have been previously adjusted.
2. Irregular wear or tire damage due to:
  - a. Field or road hazards including cuts, punctures, impact breaks and stubble damage
  - b. Wreck, collision, fire, or vandalism or other abuses
  - c. Improper inflation, overloading, misapplication, misuse, negligence, high-speed tire spinning, rim slip, defective wheel, chain damage, mismatching of adjacent tires, improper mounting or demounting & storage.
  - d. Mechanical condition of the vehicle, including misalignment, wheel imbalance, or faulty shocks or brakes.
3. Alteration of the tire or addition of alien material or transfer from one vehicle to another
4. Improper repair in a manner that does not comply with USTMA standards
5. Loss of time or use inconvenience, or any incidental or consequential damages

6. Tires used in any form of racing or competition

**WHEN DOES THE LIMITED PROTECTION POLICY END?**

Eligible tires are covered by this Limited Protection Policy for 60 months from the date of original tire manufacture date or purchase date. (Without proof of purchase, date of manufacture will be used to determine age) Policy is void when tire is worn past the last 3/32nds of tread depth at any location on the tread contact surface.

**FIELD HAZARD AND STUBBLE DAMAGE LIMITED PROTECTION POLICY**

**WHAT IS COVERED?**

Prorated Tire Replacement—Hercules radial agricultural tires that become unserviceable due to Field Hazard or Stubble damage within (36) months from date of purchase will be replaced on a prorated basis. The replacement price will be prorated based on years of service from the original date of purchase (without proof of purchase, date of manufacture will be used to determine age), as set forth on the following page. You pay for the cost of mounting, appropriate taxes, or other service charges. (Without proof of purchase, date of manufacture will be used to determine age). This Warranty covers only the original purchaser of the tire. Proof of purchase is required.

Tire Age	Tread Depth Used	Adjustment Allowance
12 months or less	no more than 25%	75%
24 months or less	no more than 50%	50%
36 months or less	no more than 75%	25%

**WHAT IS NOT COVERED?**

1. Tires branded or marked "NA" (not adjustable) or "blem" (cosmetically blemished), or that have been previously adjusted.
2. Bias agricultural tires.
3. Irregular wear or tire damage due to:
  - a. Wreck, collision, fire, or vandalism.
  - b. Improper inflation, overloading, misapplication, misuse, negligence, high-speed tire spinning, rim slip, chain damage, mismatching of adjacent tires, improper mounting or demounting.
  - c. Mechanical condition of the vehicle, including misalignment, wheel imbalance, or faulty shocks or brakes.
4. Alteration of the tire or addition of alien material or transfer from one vehicle to another.
5. Improper repair in a manner that does not comply with USTMA standards.
6. Loss of time or use inconvenience, or any incidental or consequential damages.
7. Tires used in pulling contests

**LIMITED PROTECTION POLICY**

The following Hercules brand industrial tire(s) are covered against defects in workmanship and material for the original usable tread, limited to five (5) years from the date of manufacture (serial number on tire): GRIPPER SKID STEER, X-WALL, HAULER SKS, XD44 SKID STEER, F3 BACKHOE, SUPER LUG R4 BACKHOE, SUPER LUG ADV R4 BACKHOE, SKS R1 TRACTIONMASTER, 4L I3 MULTIPURPOSE, L2 LOADER, L3 LOADER, G3/L3 TELEHANDLER, G2/L2 TELEHANDLER, STRONG GUARD B-R4, STRONG GUARD B-13, STRONG GUARD S-L2.

The following Hercules brand industrial tire(s) are covered against defects in workmanship and material for the original usable tread, limited to three (3) years from the date of manufacture (serial number on tire): RADIAL E3/L3 LOADER / H-DR 325, RADIAL G2/L2 H-DR220.

If your Hercules brand industrial tire is not listed above, contact Hercules Tire to find out the length of coverage on your tire.

If an examination by Hercules Tire shows that any such tire became unserviceable as a result of a workmanship or material related condition, it will, at the option of Hercules Tire, either be repaired at no charge or a credit will be issued towards the purchase price of a replacement tire.

No Charge Adjustment—If a defect in workmanship and materials is found and the tire cannot be repaired within the first 10% of the original usable tread a no charge adjustment will be implemented.

Prorated Adjustment—If a defect in workmanship and materials is found and the tire cannot be repaired after 10% of the original usable tread or thereafter up to three (3) or five (5) years from the serial number date, the prorated credit will be determined by multiplying the original purchase price of the tire by the percentage of usable tread remaining on the tire. Costs for mounting, filling and any other service related charges or applicable taxes are payable by the customer.

**GENERAL STANDARDS AND EXCLUSIONS**

All Hercules brand industrial tires are designed and manufactured to carry the loads at the appropriate speeds given in the ETRTO-standards.

**MOUNTING**

- Sizes of tire and rim should correspond to each other.
- The sizes of the rim should correspond to the ETRTO-standards and tolerances, the type should be flat base or split wheel for solid resilient tires.
- The rim and the rings should be in good shape, without cracks, deformations or excessive rust. Deformed or damaged parts should be replaced.
- The rim load capacity should be equal to or exceed the tire load capacity.
- All rings making part of the rim should be used.
- Only trained people, using the right tooling, working in line with the general and local safety regulations should do tire-fitting.

**SPEEDS**

Maximum speeds—The maximum speed of the vehicle should not exceed the ETRTO values. They are given for the unloaded vehicle.

Average speeds—As industrial tires are designed for intermittent service only and limited running distances, the working day average speed (WDAS) should not exceed 5 km/h at an average load of 75% of the maximum ETRTO load, this at an ambient temperature of 20°C, for solid tires. For pneumatic tires the maximum continuous average speed (WDAS) should not exceed 10 km/h at an average load of 75% of the maximum ETRTO-load. For average loads, average speeds and ambient temperatures exceeding the indicated values and for distances longer than 2 km per journey, the application has to be investigated in detail by Hercules Tire in order to check whether the tire working temperature remains within acceptable and safe limits.

**USAGE**

Normal and moderate use is considered as long as no foreign materials are destroying the tire and as long as braking, accelerating and steering forces are within the normal driving-conditions.

**AMBIENT TEMPERATURE**

Hercules industrial tires can operate at ambient temperatures from -30°C up to +50°C. Higher ambient temperatures can however be allowed after a technical review and a written acceptance of the application by Hercules Tire. Tire parameters, such as deformation and rolling resistance might be influenced accordingly.

**STORAGE**

Hercules industrial tires have to be stored in a protected environment (a dark and dry place, away from ozone), as specified in the ETRTO Recommendations.

**TIRE FILL**

The protection policy will become void for all tire-wheel assemblies filled with tirefill, unless the material and filling process have been approved by Hercules Tire and the filling has been done in line with the filling specifications from the tire-fill supplier. One should also consider that stresses on wheels and impacts on carcasses will be intensified for tire-filled tires.

**EXCLUSIONS**

- Tires purchased as seconds, mark downs or used;
- Failures related to field or road hazards including cuts, punctures, impact breaks and stubble damage;
- Failures relating to improper mounting procedures;

- Failures relating to overloading or use at speeds in excess of the maximum recommended speed;
- Tires mounted on rims which are not recommended by the Tire and Rim Association;
- Uneven or rapid wear due to mechanical irregularity of the vehicle;
- Tires that have run under or over inflated;
- Damage resulting from fires, accidents, chemical corrosion or vandalism;
- Weather cracking or ozone damage on tires more than three years old;
- Tires that have been used in applications other than the application for which the tire was designed
- Incidental or consequential damages

**PROTECTION CLAUSE**

All Hercules industrial tires are covered against defects due to materials or workmanship. This Protection Policy remains valid for three (3) or five (5) years from the date of manufacturing. The validity of this protection Policy depends on the tire type and on the conditions described in the general standards:

- a) for solid resilients: as long as the safety line, marked on the sidewall of the tire by "60J" is not reached.b)
- b) for press-on solid tires: as long as one third of the total rubber height has not been worn of (in other words, as long as 2/3rd of the rubber section height is still available).
- c) for pneumatic tires: as long as tread lugs are available in the center part of the tire.

If the customer finds a failure to a tire, a request for an adjustment should be made by calling 1-844-708-7291 or sending an e-mail to [Hercules.adjustment@herculestire.com](mailto:Hercules.adjustment@herculestire.com).

Thermal explosions due to a WDAS above 2.5 km/h on budget solid tires and 5 km/h on budget pneumatic tires are not considered a manufacturing defect and are therefore not warrantable.

If our analysis shows a tire has failed under this Limited Protection Policy, we will make an allowance against the current list price towards the purchase of a new Hercules tire relative to the unused portion of the tread on the defective tire. The cost of transportation, service and sales tax, already paid will be borne by the owner of the tire making the claim. This guarantee is for the exclusive benefit of the owner and this warranty is not assignable. Hercules Tire does not warrant against consequential or incidental damage arising from defective tire.

---

---

---

---

---

---

---

---

---

---

---

---

---

---

---

---

---

---

---

---

---

---

---

---

---

---





# **HERCULES TIRES**

**COMMERCIAL**

---

**CONSUMER RELATIONS:**

800.677.9535

**GENERAL INQUIRIES:**

info@herculestires.com

**MAILING ADDRESS:**

The Hercules Tire & Rubber Company  
12200 Herbert Wayne Ct, Ste 150  
Huntersville, NC 28078 USA

***HerculesTiresCommercial.com*** || ***#HerculesTires***

